

FARMLAND FOR SALE

Busey Farm Brokerage



99.5 +/- Acres For Sale
Christian County

Farm for Sale

Rice & Younker Farm

99.5 +/- Total Taxable Acres (Pending Completed Survey)

Contact Information



Corey Zelhart, Listing Broker—217-425-8245/217-493-2712 corey.zelhart@busey.com

Alex Rhoda, Broker 217-425-8821

Steve Myers, Managing Broker 309-962-2311

Listing Price

99.5 +/- Acres X \$11,500/Ac = \$1,144,250.00

Lease/Possession

The lease for this farm is currently open for 2023.

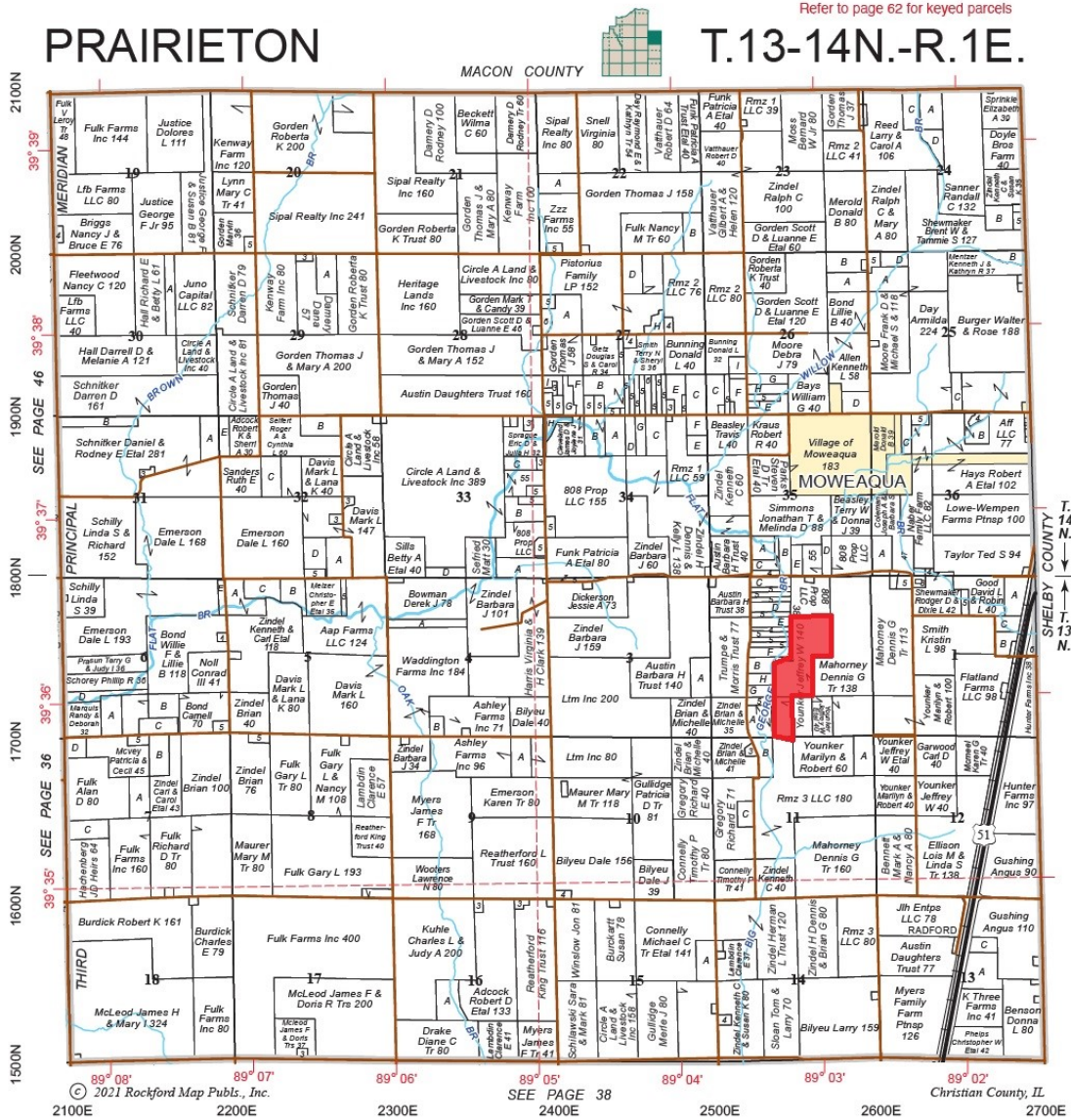
busey.com

259 E. South Park—Decatur, IL 62523
Phone: 217-425-8340—Fax 217-362-2724

Disclaimer: The information contained in this brochure is considered accurate. It is subject to verification and no liability for errors or omissions is assumed. There are no warranties, expressed or implied, as to the information herein contained, and it is recommended that an independent inspection of the property be made by all buyers.
Agency: Busey Farm Brokerage, a division of Busey Bank, its agents and representatives, are agents of the Seller

Farm for Sale

BUSEY FARM BROKERAGE—99.5 +/- Acres—Christian County



Reprinted with permission of Rockford Map Publishers, Inc.



Licensed Real Estate Broker Corporation

Corey Zelhart, Listing Broker
EMAIL: Corey.Zelhart@busey.com

Phone 217-425-8245
Cell 217-493-2712

Alex Rhoda, Broker

Phone 217-425-8821

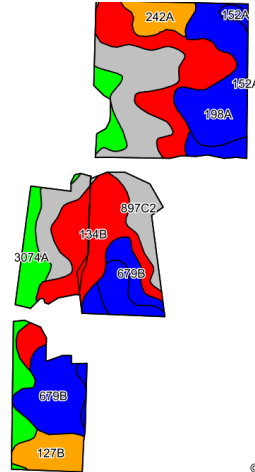
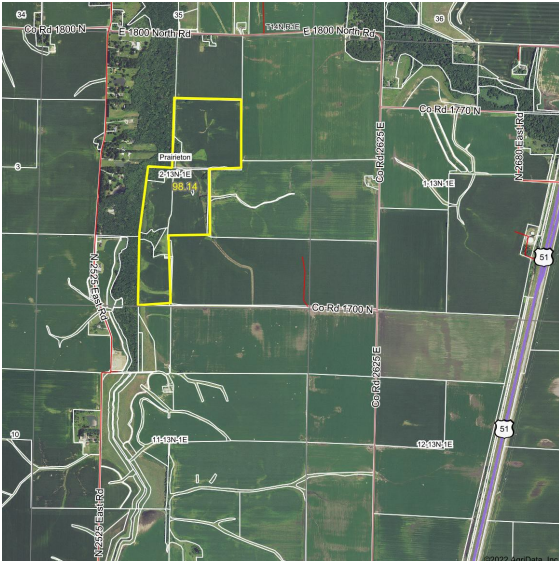
Steve Myers, Managing Broker/Auctioneer

Phone 309-962-2311

Disclaimer: The information contained in this brochure is considered accurate. It is subject to verification and no liability for errors or omissions is assumed. There are no warranties, expressed or implied, as to the information herein contained, and it is recommended that an independent inspection of the property be made by all buyers.
Agency: Busey Farm Brokerage, a division of Busey Bank, its agents and representatives, are agents of the Seller

Farm for Sale

Rice & Younker Farm—99.5 +/- Taxable Acres



©2022 AgriData, Inc.

Area Symbol: IL021, Soil Area Version: 15

Code	Soil Description	Acres	Percent of field	Il. State Productivity Index Legend	Corn Bu/A	Soybeans Bu/A	Crop productivity index for optimum management
**134B	Camden silt loam, 2 to 5 percent slopes	23.88	28.8%		**164	**50	**118
**897C2	Bunkum-Atlas silt loams, 5 to 10 percent slopes, eroded	17.22	20.8%		**122	**42	**94
198A	Elburn silt loam, 0 to 2 percent slopes	13.80	16.7%		197	61	143
**679B	Blackberry silt loam, 2 to 5 percent slopes	11.79	14.2%		**192	**59	**141
3074A	Radford silt loam, 0 to 2 percent slopes, frequently flooded	8.24	9.9%		186	58	136
**127B	Harrison silt loam, 2 to 5 percent slopes	3.96	4.8%		**177	**54	**129
242A	Kendall silt loam, 0 to 2 percent slopes	3.20	3.9%		172	53	125
152A	Drummer silty clay loam, 0 to 2 percent slopes	0.75	0.9%		195	63	144
Weighted Average					168.2	52.7	123.3

Christian County FSA Data

Farm Number: 6186
 Tract Number/CLU: Part of Tract 1176
 Total Acres: 99.07
 Cropland Acres: 86.58

2021 Whole Farm Yield

2021 Corn 245 Bushels per Acre
2021 Soy 78 Bushels per Acre

2022 Soil Test Results

PH: 6.0 **P1:** 78.0 **K:** 562.

Real Estate Tax Information

Parcel ID #	Acres	2021 Assessed Value	2021 Taxes Payable 2022
12-15-02-200-003-00	40.0	\$15,500.00	\$1,254.68
12-15-02-400-001-00	22.0	\$7,258.00	\$593.08
12-15-02-300-003-00	17.5	\$4,123.00	\$342.48
12-15-02-300-006-00	20.0	\$7,984.00	\$823.74

Legal Description

Part of the West Half (W 1/2) of Section 2, Township 13 North, Range 1 East of the Third Principal Meridian in the County of Christian, State of Illinois.

Location

Located 1 mile directly south of Moweaqua IL, West of Rt. 51. and accessed via CR 1700N to the South



Disclaimer: The information contained in this brochure is considered accurate. It is subject to verification and no liability for errors or omissions is assumed. There are no warranties, expressed or implied, as to the information herein contained, and it is recommended that an independent inspection of the property be made by all buyers.
Agency: Busey Farm Brokerage, a division of Busey Bank, its agents and representatives, are agents of the Seller

Farm for Sale

UAF Images



Busey FARM
BROKERAGE

Disclaimer: The information contained in this brochure is considered accurate. It is subject to verification and no liability for errors or omissions is assumed. There are no warranties, expressed or implied, as to the information herein contained, and it is recommended that an independent inspection of the property be made by all buyers.
Agency: Busey Farm Brokerage, a division of Busey Bank, its agents and representatives, are agents of the Seller