

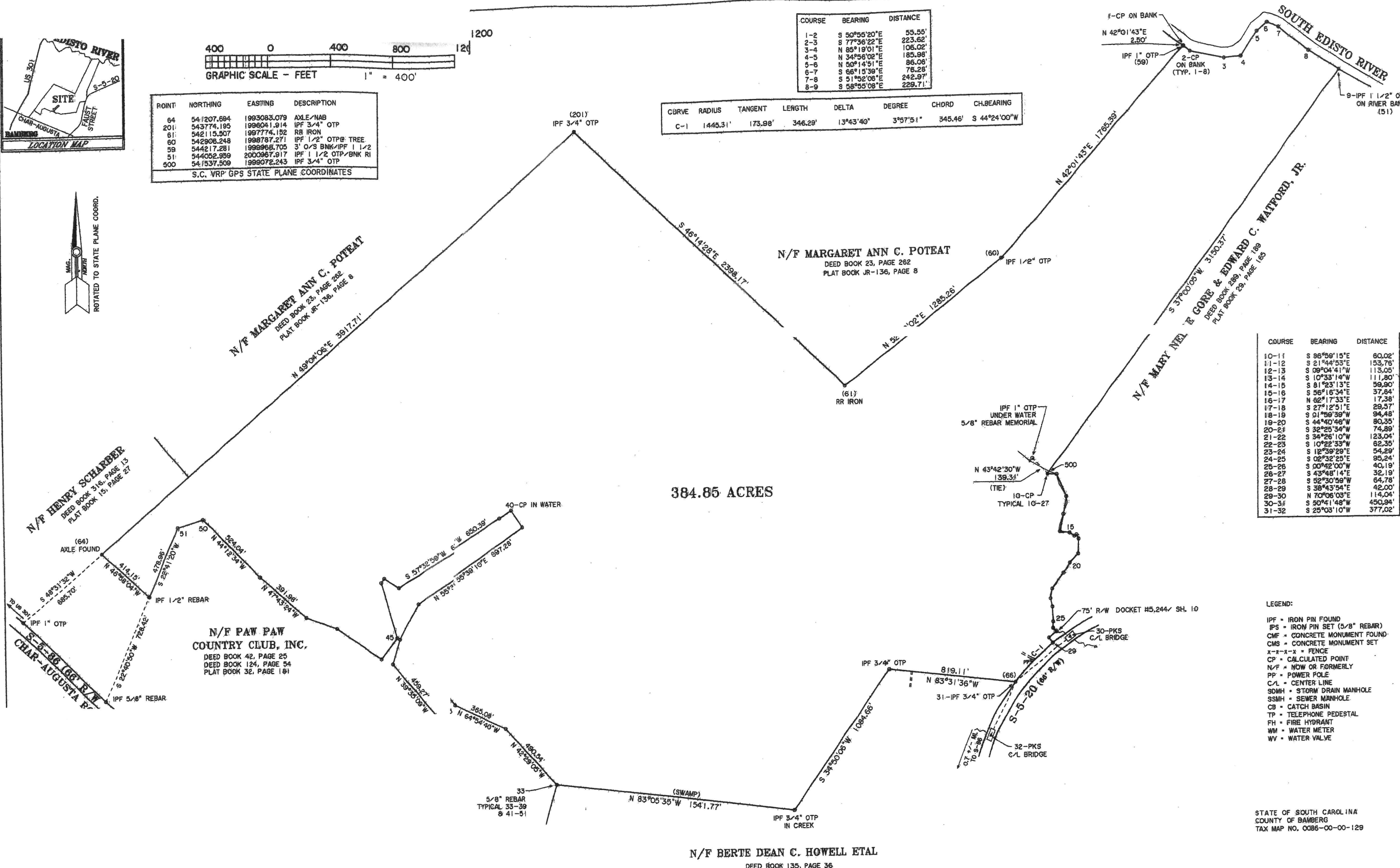
POINT	NORTHING	EASTING	DESCRIPTION
64	541207.694	1993083.079	AXLE/NAB
201	543774.195	1996041.914	IPF 3/4" OTP
61	542115.907	1997774.192	RR IRON
60	542908.248	1998787.271	IPF 1/2" OTP: TREE
59	544217.281	1998966.705	3' O/S BNK/IPF 1 1/2
51	544052.959	2000967.917	IPF 1 1/2 OTP/BNK RI
900	541537.809	1999072.243	IPF 3/4" OTP

S.C. VRS GPS STATE PLANE COORDINATES



COURSE	BEARING	DISTANCE
1-2	S 50°55'20"E	55.55'
2-3	S 77°36'22"E	223.62'
3-4	N 85°19'01"E	106.02'
4-5	N 34°56'02"E	185.98'
5-6	N 50°14'51"E	86.06'
6-7	S 68°15'39"E	76.28'
7-8	S 51°52'08"E	242.97'
8-9	S 58°55'08"E	229.71'

CURVE	RADIUS	TANGENT	LENGTH	DELTA	DEGREE	CHORD	CH.BEARING
C-1	1445.31'	173.98'	346.29'	13°43'40"	3°57'51"	345.46'	S 44°24'00"W



COURSE	BEARING	DISTANCE
10-11	S 86°06'15"E	80.02'
11-12	S 21°44'53"E	153.76'
12-13	S 09°04'41"W	113.00'
13-14	S 10°33'14"W	111.80'
14-15	S 81°23'13"E	59.90'
15-16	S 56°16'34"E	37.64'
16-17	N 62°17'33"E	17.38'
17-18	S 27°12'51"E	29.57'
18-19	S 01°58'39"W	94.48'
19-20	S 44°40'46"W	80.35'
20-21	S 32°25'34"W	74.89'
21-22	S 34°26'10"W	123.04'
22-23	S 10°22'33"W	62.35'
23-24	S 12°39'29"E	54.29'
24-25	S 02°32'25"E	95.24'
25-26	S 00°52'00"W	40.19'
26-27	S 43°48'14"E	32.19'
27-28	S 32°30'59"W	64.78'
28-29	S 38°43'54"E	42.00'
29-30	N 70°06'03"E	114.04'
30-31	S 50°41'48"W	450.94'
31-32	S 25°03'10"W	377.02'

- LEGEND:
- IPF = IRON PIN FOUND
 - IPF = IRON PIN SET (5/8" REBAR)
 - CMF = CONCRETE MONUMENT FOUND
 - CMS = CONCRETE MONUMENT SET
 - x-x-x = FENCE
 - CP = CALCULATED POINT
 - N/F = NOW OR FORMERLY
 - PP = POWER POLE
 - C/L = CENTER LINE
 - SDMH = STORM DRAIN MANHOLE
 - SSMH = SEWER MANHOLE
 - CB = CATCH BASIN
 - TP = TELEPHONE PEDESTAL
 - FH = FIRE HYDRANT
 - WM = WATER METER
 - WV = WATER VALVE

STATE OF SOUTH CAROLINA
COUNTY OF BAMBERG
TAX MAP NO. 0086-00-00-129

ALL SURVEYING CO., INC
P. O. BOX 561
BARNWELL, S.C. 29812
(803) 259-5856



44-45	S 16°04'33"E	370.86'
46-46	S 38°01'06"W	169.60'
46-47	N 54°07'09"W	345.61'
47-48	N 89°07'48"W	208.92'
48-49	N 47°43'24"W	391.98'
49-50	N 44°12'54"W	524.04'
50-51	S 73°23'00"W	168.79'

PLAT PREPARED FOR
Faust Road Timber Tract, LLC

I HEREBY STATE THAT TO THE BEST OF MY KNOWLEDGE, INFORMATION, AND BELIEF, THE SURVEY SHOWN HEREON WAS MADE IN ACCORDANCE WITH THE REQUIREMENTS OF THE MINIMUM STANDARDS MANUAL FOR THE PRACTICE OF LAND SURVEYING IN SOUTH CAROLINA, AND MEETS OR EXCEEDS THE REQUIREMENTS FOR A CLASS C SURVEY AS SPECIFIED THEREIN.

NOTE:
SC VRS GPS WAS UTILIZED FOR CONTROL AND STATE PLANE COORDINATE DATUM NAD 83 (2011) DATUM GEOID MODEL: GEOID 12

ES.

Richard L. All

PRINTED AT BLS REC NO: 16497