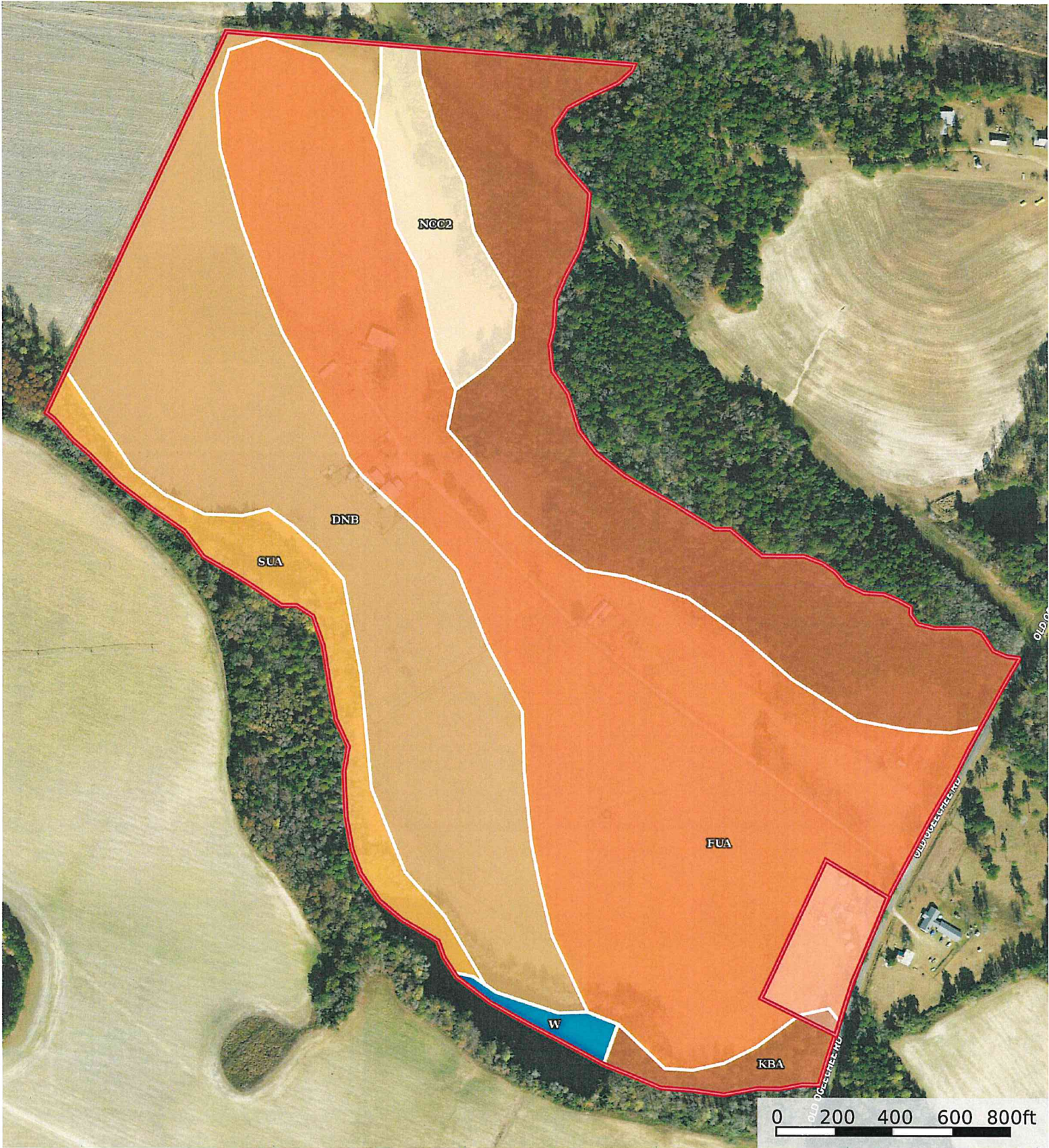


128+/- acres, 2368 Ogeechee Rd.
Screven County, Georgia, AC +/-

PLANTATION PROPERTIES
&
LAND INVESTMENTS, LLC



Outparcel - 3± acs & Boundary

Jason Williams
P: 912-764-LAND(5263) or 1-833-GOT-LAND (468-5263)

LandandRivers.com |

M The information contained herein was obtained from sources deemed to be reliable. MapRight Services makes no warranties or guarantees as to the completeness or accuracy thereof.

 Boundary 135.0 ac

SOIL CODE	SOIL DESCRIPTION	ACRES	%	CPI	NCCPI	CAP
FuA	Fuquay loamy sand, 0 to 2 percent slopes	58.9	43.63	0	46	2s
DnB	Dothan-Norfolk complex, 2 to 5 percent slopes	34.78	25.76	0	62	2e
KBA	Kinston and Bibb soils, 0 to 2 percent slopes, frequently flooded	27.36	20.27	0	54	6w
SuA	Surrency mucky sand, 0 to 1 percent slopes, frequently flooded	7.09	5.25	0	22	6w
NcC2	Nankin-Cowarts complex, 5 to 8 percent slopes, eroded	5.87	4.35	0	63	4e
W	Water	1.0	0.74	0	-	-
TOTALS		135.0 1(*)	100%	-	50.88	3.12

(*) Total acres may differ in the second decimal compared to the sum of each acreage soil. This is due to a round error because we only show the acres of each soil with two decimal.

Capability Legend

Increased Limitations and Hazards

Decreased Adaptability and Freedom of Choice Users

Land, Capability

	1	2	3	4	5	6	7	8
'Wild Life'	•	•	•	•	•	•	•	•
Forestry	•	•	•	•	•	•	•	
Limited	•	•	•	•	•	•	•	
Moderate	•	•	•	•	•	•		
Intense	•	•	•	•	•			
Limited	•	•	•	•				
Moderate	•	•	•					
Intense	•	•						
Very Intense	•							

Grazing Cultivation

(c) climatic limitations (e) susceptibility to erosion

(s) soil limitations within the rooting zone (w) excess of water