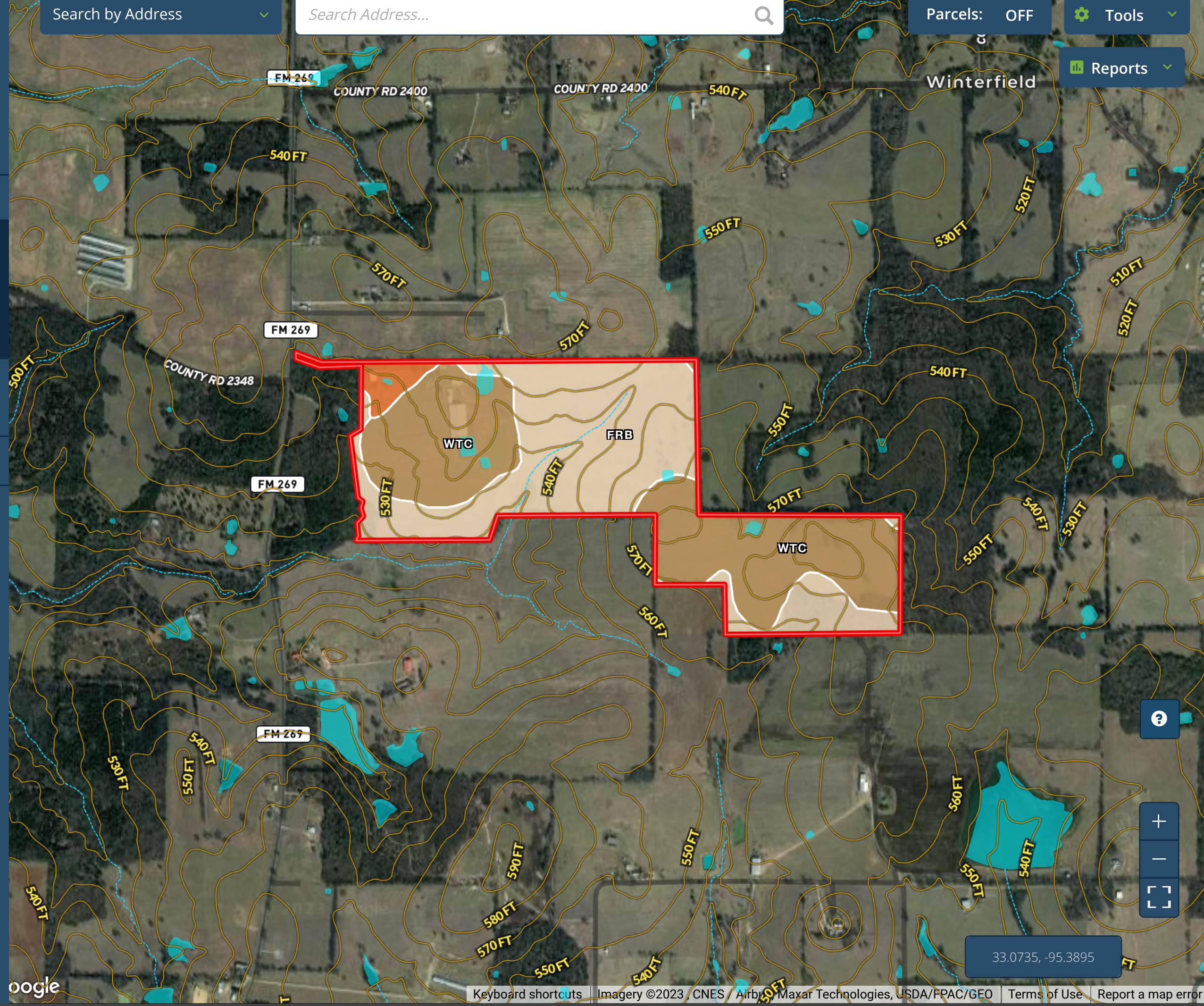


Boundary ▭ 203.97 ac

CODE	DESCRIPTION	ACRES	%	CPI	NCCPI	CAP ?
FrB	Freestone fine sandy loam, 1 to 3 percent slopes	100.25	49.15%	-	72	3e ?
WtC	Woodtell loam, 2 to 5 percent slopes	96.73	47.42%	-	61	3e ?
WoC	Wolfpen loamy fine sand, 2 to 5 percent slopes	6.99	3.43%	-	56	3e ?
Totals		0	66.24	NCCPI Average		3 Cap. Average
203.97 ac ?		Average				



DELETE REPORT

PRINT

