



**Audio Video Solutions**

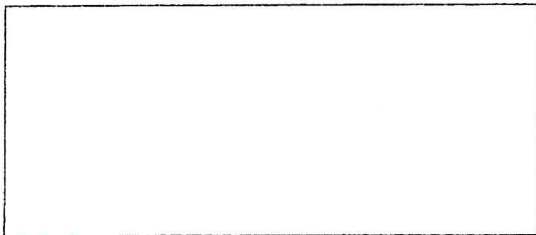
**Address:** 98 W Main St, Kerrville, TX 78028

**Phone:** (830) 896-3887

**Website:** <http://avskerrville.com/>

**Hours**

Monday - Friday 8:00 AM - 5:00 PM





**SOLEDAD SPRINGS ESTATES**

A SUBDIVISION OF 485.839 ACRES, COMPRISED OF APPROXIMATELY 298 AC. OUT OF THE C.C.S.D. & R.H.R. CO. SURVEY NO. 1194, 33 AC. OUT OF B.S. & F. SURVEY NO. 2, AND 158 AC. OUT OF J.H. COLEBATH SURVEY NO. 1942, IN KERR COUNTY, TEXAS.

GEORGE COWDEN, KERRVILLE, TEXAS - OWNER  
D. R. VOELKEL, Registered Professional Engineer

Scale: 1" = 400'  
Graphic Scale  
400 800 1200 1600 FT.  
July 1972

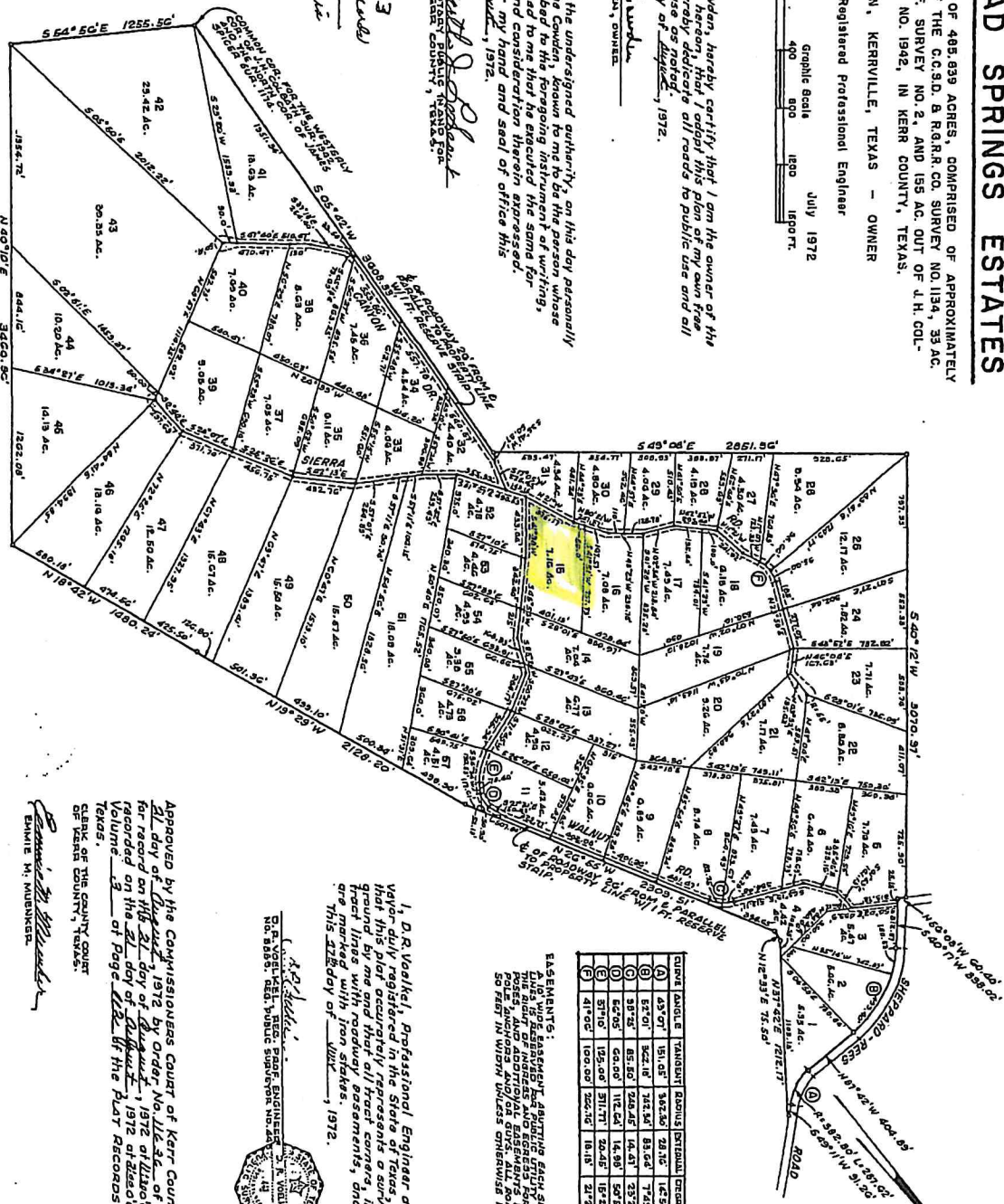
STATE OF TEXAS,  
COUNTY OF KERR:  
I, George Cowden, hereby certify that I am the owner of the property shown hereon, that I adopt this plan of my own free consent, and hereby dedicate all roads to public use and all easements to use as noted.  
This 21st day of July, 1972.

*George Cowden*  
GEORGE COWDEN, OWNER

Before me, the undersigned authority, on this day personally appeared, George Cowden, known to me to be the person whose name is subscribed to this foregoing instrument of writing, and acknowledged to me that he executed the same for the purposes and consideration therein expressed.  
This 21st day of July, 1972.

*D. R. Voelkel*  
D. R. VOELKEL, REGISTERED PROFESSIONAL ENGINEER  
KERR COUNTY, TEXAS

Vol. 3, Page 112  
333  
C.C.S.D. & R.H.R. Co.  
George Cowden



TRACT RANGE & TOWNSHIP	RANGE	TOWNSHIP	SECTION	ACRES	OWNER
1	45° 01'	51° 05'	36, 37, 38	12.50	GEORGE COWDEN
2	45° 01'	51° 05'	39, 40	12.50	GEORGE COWDEN
3	45° 01'	51° 05'	41, 42	12.50	GEORGE COWDEN
4	45° 01'	51° 05'	43, 44	12.50	GEORGE COWDEN
5	45° 01'	51° 05'	45, 46	12.50	GEORGE COWDEN
6	45° 01'	51° 05'	47, 48	12.50	GEORGE COWDEN
7	45° 01'	51° 05'	49, 50	12.50	GEORGE COWDEN
8	45° 01'	51° 05'	51, 52	12.50	GEORGE COWDEN
9	45° 01'	51° 05'	53, 54	12.50	GEORGE COWDEN
10	45° 01'	51° 05'	55, 56	12.50	GEORGE COWDEN
11	45° 01'	51° 05'	57, 58	12.50	GEORGE COWDEN
12	45° 01'	51° 05'	59, 60	12.50	GEORGE COWDEN
13	45° 01'	51° 05'	61, 62	12.50	GEORGE COWDEN
14	45° 01'	51° 05'	63, 64	12.50	GEORGE COWDEN
15	45° 01'	51° 05'	65, 66	12.50	GEORGE COWDEN
16	45° 01'	51° 05'	67, 68	12.50	GEORGE COWDEN
17	45° 01'	51° 05'	69, 70	12.50	GEORGE COWDEN
18	45° 01'	51° 05'	71, 72	12.50	GEORGE COWDEN
19	45° 01'	51° 05'	73, 74	12.50	GEORGE COWDEN
20	45° 01'	51° 05'	75, 76	12.50	GEORGE COWDEN
21	45° 01'	51° 05'	77, 78	12.50	GEORGE COWDEN
22	45° 01'	51° 05'	79, 80	12.50	GEORGE COWDEN
23	45° 01'	51° 05'	81, 82	12.50	GEORGE COWDEN
24	45° 01'	51° 05'	83, 84	12.50	GEORGE COWDEN
25	45° 01'	51° 05'	85, 86	12.50	GEORGE COWDEN
26	45° 01'	51° 05'	87, 88	12.50	GEORGE COWDEN
27	45° 01'	51° 05'	89, 90	12.50	GEORGE COWDEN
28	45° 01'	51° 05'	91, 92	12.50	GEORGE COWDEN
29	45° 01'	51° 05'	93, 94	12.50	GEORGE COWDEN
30	45° 01'	51° 05'	95, 96	12.50	GEORGE COWDEN
31	45° 01'	51° 05'	97, 98	12.50	GEORGE COWDEN
32	45° 01'	51° 05'	99, 100	12.50	GEORGE COWDEN

EASEMENTS:  
A 10' WIDE EASEMENT STARTING EACH SIDE OF THE PROPOSED ROAD AND CONTAINING THE RIGHT OF WAY FOR THE ROAD AND EGRESS FOR THE INTERLUCE PUBLIC UTILITY AND GAS LINES. ALL ROAD EASEMENTS ARE 30 FEET IN WIDTH UNLESS OTHERWISE INDICATED.

I, D. R. Voelkel, Professional Engineer and Public Surveyor duly registered in the State of Texas, do hereby certify that this plat accurately represents a survey made on the ground by me and that all tract corners, intersections of tract lines with roadway, easements, and roadway angles are true to the day of July 1972.

*D. R. Voelkel*  
D. R. VOELKEL, REG. PROF. ENGINEER  
NO. 8585, REG. PUBLIC SURVEYOR NO. 242



Approved by the Commissioners Court of Kerr County, Texas on the 21st day of July 1972 by Order No. 116-32, of said court. Filed for record on the 21st day of August 1972 at 10:25 o'clock A.M. in Volume 3 of Page 112 of the Plat Records of Kerr County, Texas.

*Emmie M. Muehrcke*  
EMMIE M. MUEHRCKE, CLERK OF THE COUNTY COURT OF KERR COUNTY, TEXAS.

