

# GREEN FIELDS FINAL PLAT

PHASE ONE - LOTS 1 and 13 through 61

Developed by: Bill Whitson  
P.O. Box 69  
Pointe, W.V. 25437  
Scale: 1" = 200'

Total Acreage of Subdivision: 143 AC +/-  
Total Acreage of Parent Tract: 155 AC +/-  
Acreage left undeveloped at this time: 0.00  
Acreage within Roads, R/W's: 7.38 AC +/-  
Deed Book 353, Page 579 & T.M. Sp 17 parcel 56  
Springfield District, Hampshire County, W.V.

### CLASS II RESIDENTIAL

This subdivision has been approved by the Hampshire County Planning Commission as a Class II - Residential Subdivision. Some of the roads may not be designed and constructed for year-round access by passenger, emergency, and service vehicles. The roads shown herein have been constructed to meet the specifications set forth by the Hampshire County Planning Commission.

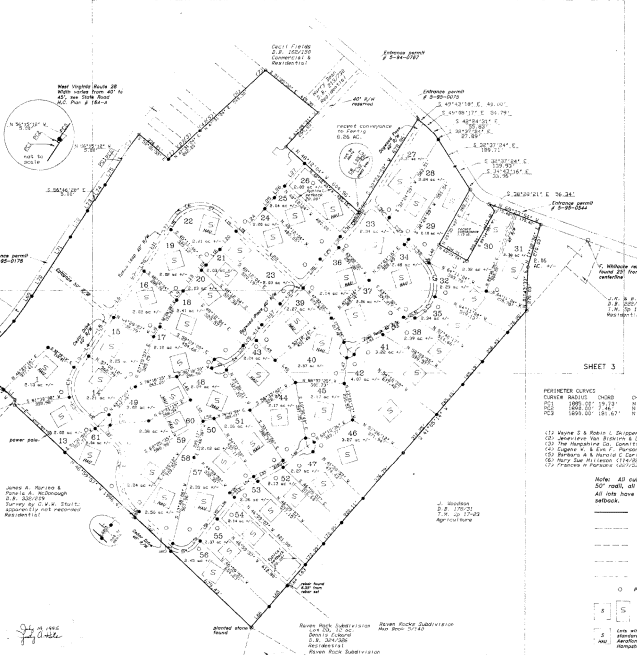
No jurisdictional wetlands were found by the U. S. Army Corps of Engineers.

This plat is in conformance to any covenants and restrictions affecting the property and all rights-of-way and easements affecting the property have been shown.

Bill Whitson

ACRES	AREA	AREA	AREA	AREA	AREA
1.00	1.00	1.00	1.00	1.00	1.00
2.00	2.00	2.00	2.00	2.00	2.00
3.00	3.00	3.00	3.00	3.00	3.00
4.00	4.00	4.00	4.00	4.00	4.00
5.00	5.00	5.00	5.00	5.00	5.00
6.00	6.00	6.00	6.00	6.00	6.00
7.00	7.00	7.00	7.00	7.00	7.00
8.00	8.00	8.00	8.00	8.00	8.00
9.00	9.00	9.00	9.00	9.00	9.00
10.00	10.00	10.00	10.00	10.00	10.00
11.00	11.00	11.00	11.00	11.00	11.00
12.00	12.00	12.00	12.00	12.00	12.00
13.00	13.00	13.00	13.00	13.00	13.00
14.00	14.00	14.00	14.00	14.00	14.00
15.00	15.00	15.00	15.00	15.00	15.00
16.00	16.00	16.00	16.00	16.00	16.00
17.00	17.00	17.00	17.00	17.00	17.00
18.00	18.00	18.00	18.00	18.00	18.00
19.00	19.00	19.00	19.00	19.00	19.00
20.00	20.00	20.00	20.00	20.00	20.00
21.00	21.00	21.00	21.00	21.00	21.00
22.00	22.00	22.00	22.00	22.00	22.00
23.00	23.00	23.00	23.00	23.00	23.00
24.00	24.00	24.00	24.00	24.00	24.00
25.00	25.00	25.00	25.00	25.00	25.00
26.00	26.00	26.00	26.00	26.00	26.00
27.00	27.00	27.00	27.00	27.00	27.00
28.00	28.00	28.00	28.00	28.00	28.00
29.00	29.00	29.00	29.00	29.00	29.00
30.00	30.00	30.00	30.00	30.00	30.00
31.00	31.00	31.00	31.00	31.00	31.00
32.00	32.00	32.00	32.00	32.00	32.00
33.00	33.00	33.00	33.00	33.00	33.00
34.00	34.00	34.00	34.00	34.00	34.00
35.00	35.00	35.00	35.00	35.00	35.00
36.00	36.00	36.00	36.00	36.00	36.00
37.00	37.00	37.00	37.00	37.00	37.00
38.00	38.00	38.00	38.00	38.00	38.00
39.00	39.00	39.00	39.00	39.00	39.00
40.00	40.00	40.00	40.00	40.00	40.00
41.00	41.00	41.00	41.00	41.00	41.00
42.00	42.00	42.00	42.00	42.00	42.00
43.00	43.00	43.00	43.00	43.00	43.00
44.00	44.00	44.00	44.00	44.00	44.00
45.00	45.00	45.00	45.00	45.00	45.00
46.00	46.00	46.00	46.00	46.00	46.00
47.00	47.00	47.00	47.00	47.00	47.00
48.00	48.00	48.00	48.00	48.00	48.00
49.00	49.00	49.00	49.00	49.00	49.00
50.00	50.00	50.00	50.00	50.00	50.00
51.00	51.00	51.00	51.00	51.00	51.00
52.00	52.00	52.00	52.00	52.00	52.00
53.00	53.00	53.00	53.00	53.00	53.00
54.00	54.00	54.00	54.00	54.00	54.00
55.00	55.00	55.00	55.00	55.00	55.00
56.00	56.00	56.00	56.00	56.00	56.00
57.00	57.00	57.00	57.00	57.00	57.00
58.00	58.00	58.00	58.00	58.00	58.00
59.00	59.00	59.00	59.00	59.00	59.00
60.00	60.00	60.00	60.00	60.00	60.00
61.00	61.00	61.00	61.00	61.00	61.00

Green Engineering Office  
Burlington, W.V. 304/289-5033



- SHEET 3**
- PERMETER SURVEY  
TURNER SURVEY  
RCS  
RCS  
RCS
- DATE: 10/26/85  
BY: RWH
- 1) Wayne S & Helen S. Dupont (200-070) Assurances  
2) Abner H. & Mary E. Dupont (200-070) Assurances  
3) The Hampshire Co. Board of Public Works (200-070) Assurances  
4) Robert H. & Mary E. Dupont (200-070) Assurances  
5) Mary E. Dupont (200-070) Assurances  
6) Robert H. & Mary E. Dupont (200-070) Assurances
- Note: All cul-de-sacs are 20' wide, all other roads are 30'. All lots have a standard 20' setback.
- pipeline --- meter at pipe found  
--- lot lines --- meter set  
--- existing property lines  
--- water lines  
--- roads  
○ proposed well location
- APPROVED FOR RECORDATION  
BY: RWH  
DATE: 10/26/85
- 1) with the appropriate fee, a return to a member of the Board of Public Works, Hampshire County, West Virginia, for recording.

SHEET 2  
Del: Ralph W. Heene 10-26-85