

Parcel Address Flood Zone

BLIND SITE (WELL)

To RT. 28

Streets

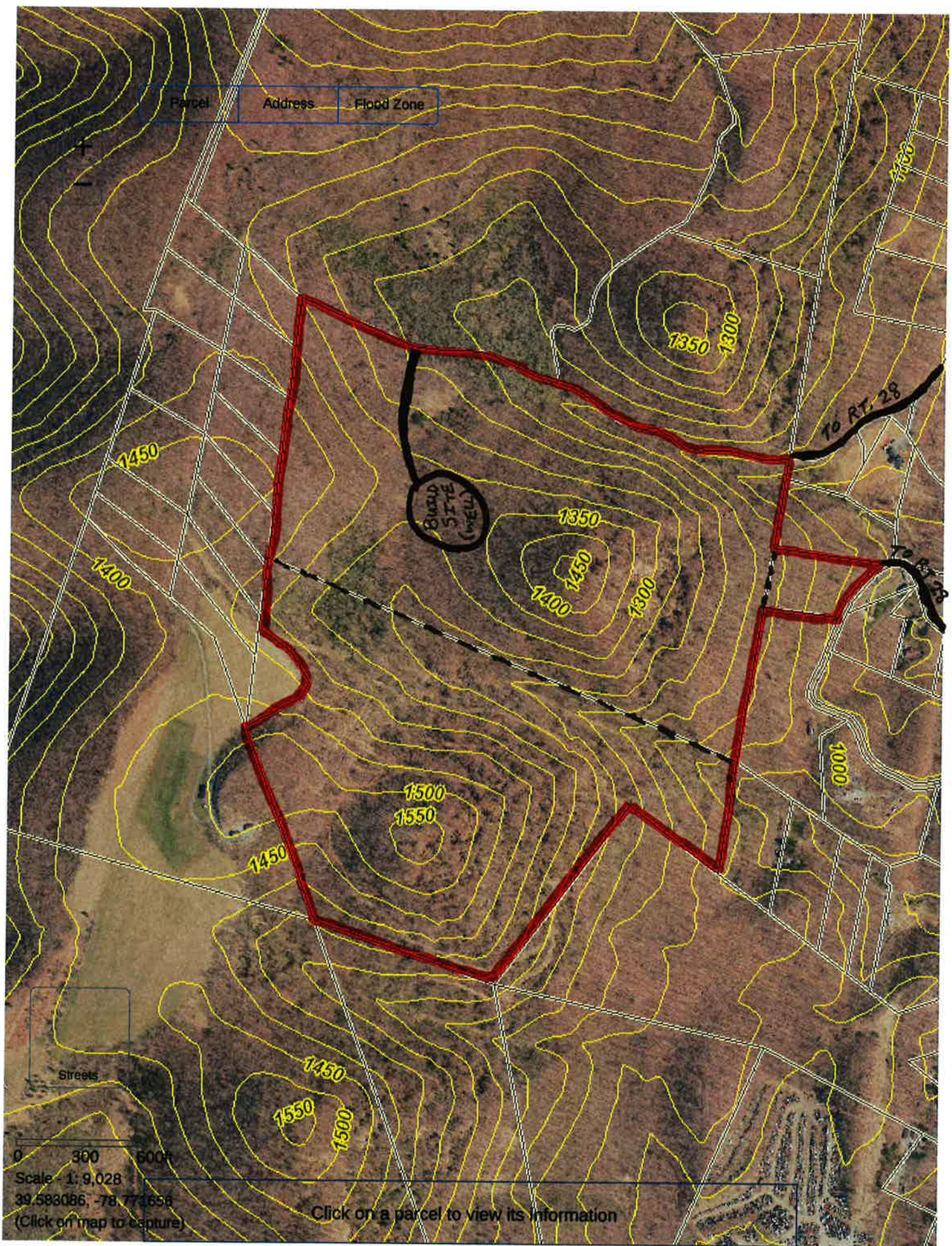
0 300 600ft

Scale - 1:9,028

39.583086, -78.771656

(Click on map to capture)

Click on a parcel to view its information



LOT III
59.46 Ac. +/-

LOT IV
79.43 Ac. +/-

LOT V
~~71.71~~ AC. +/-
69.82

SOLD

6 40' R/W B
PROP. LINE

STONEPILE ON A
LARGE ROCK

STONEPILE AROUND
AN OLD STUMP

J. LLOYD
166/659

J. LLOYD
166/659

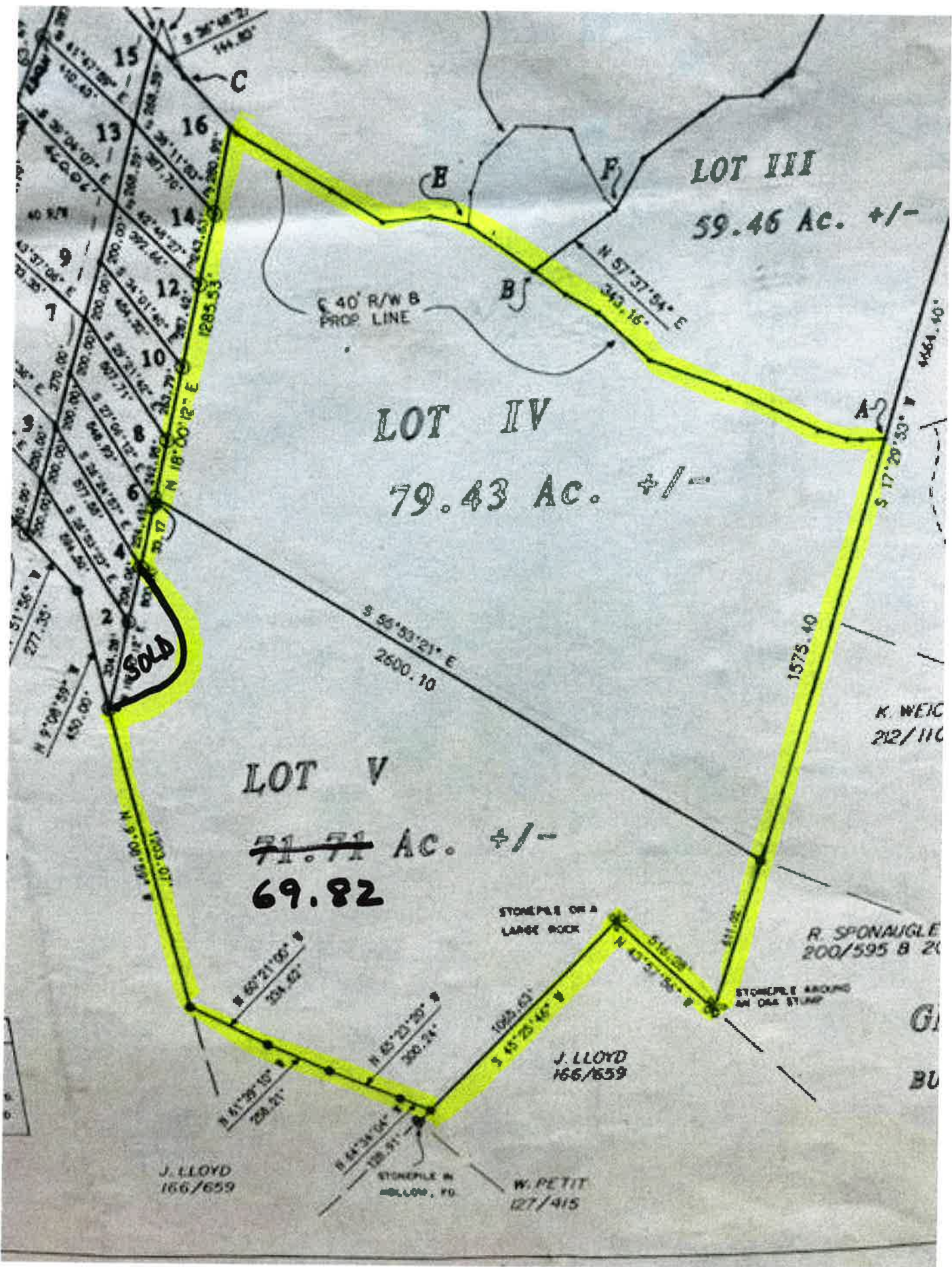
W. PETIT
127/415

K. WEIC
202/110

R. SPONAU
200/595 B 20

G

BU



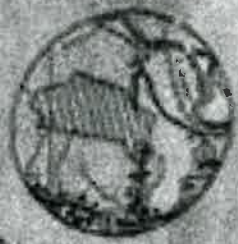
PLAT OF SUBDIVISION:

HIGH POINT ACRES

PLAINEFORT DISTRICT MINERAL COUNTY VA.

TM. 9, PCS. 4, 5, & 6

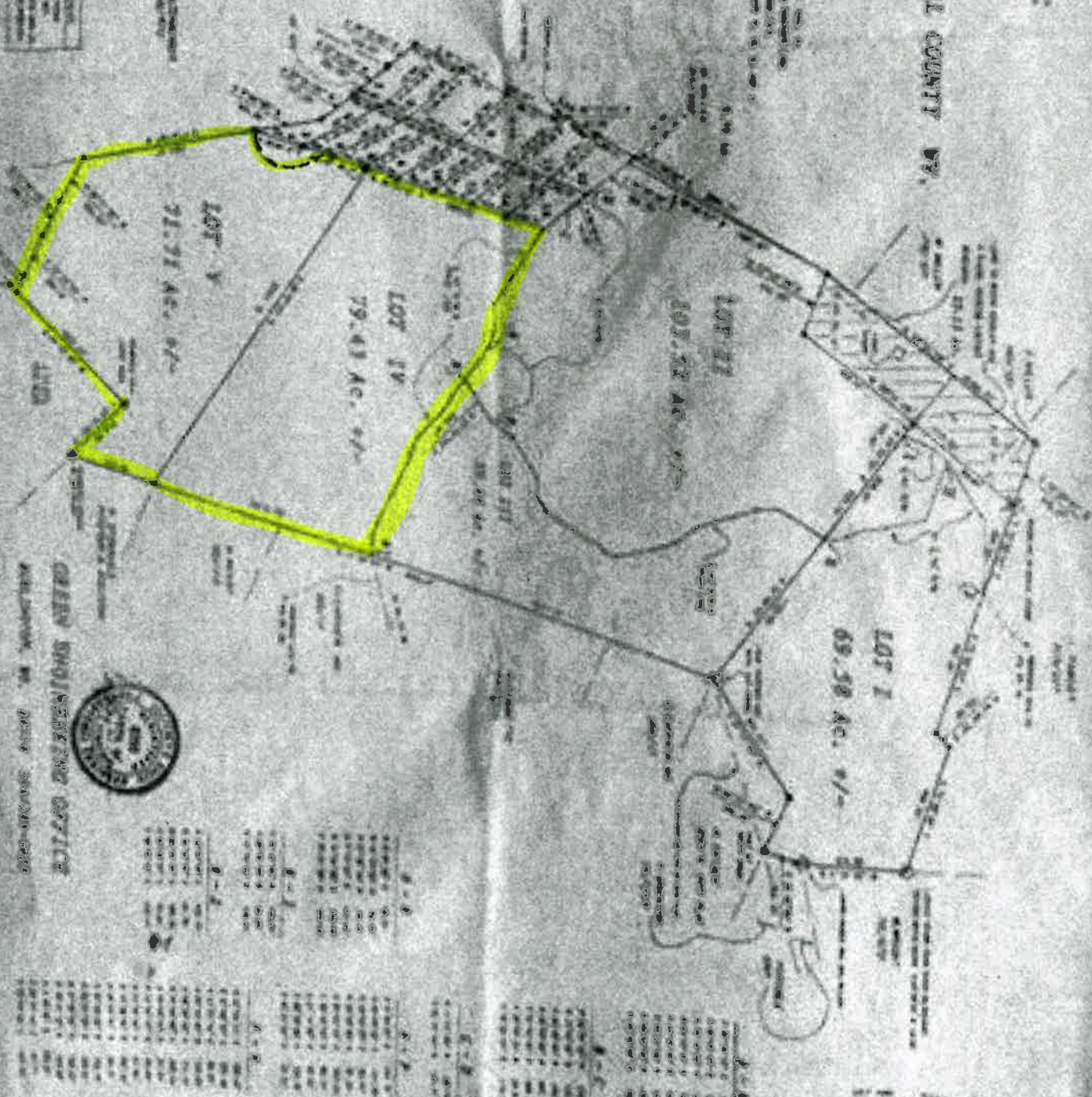
DB. 159 PG. 417



CONNECTED PLAT
NO. 11, 12, 13, 14, 15, 16, 17, 18, 19, 20, 21, 22, 23, 24, 25, 26, 27, 28, 29, 30, 31, 32, 33, 34, 35, 36, 37, 38, 39, 40, 41, 42, 43, 44, 45, 46, 47, 48, 49, 50, 51, 52, 53, 54, 55, 56, 57, 58, 59, 60, 61, 62, 63, 64, 65, 66, 67, 68, 69, 70, 71, 72, 73, 74, 75, 76, 77, 78, 79, 80, 81, 82, 83, 84, 85, 86, 87, 88, 89, 90, 91, 92, 93, 94, 95, 96, 97, 98, 99, 100

LOT ACRES

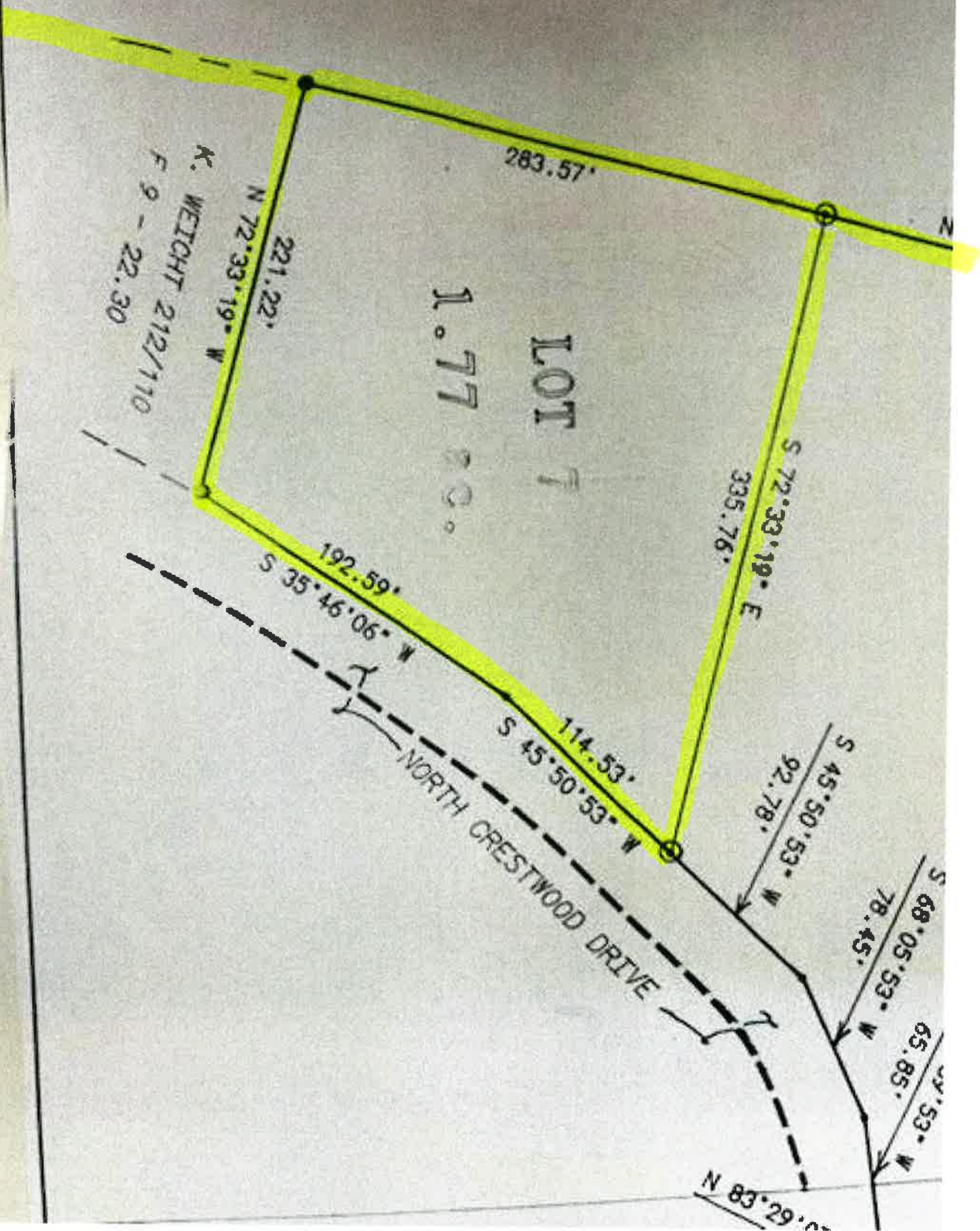
LOT	ACRES
1	1.11 AC.
2	2.42 AC.
3	1.11 AC.
4	1.11 AC.
5	1.11 AC.
6	1.11 AC.
7	1.11 AC.
8	1.11 AC.
9	1.11 AC.
10	1.11 AC.
11	1.11 AC.
12	1.11 AC.
13	1.11 AC.
14	1.11 AC.
15	1.11 AC.
16	1.11 AC.
17	1.11 AC.
18	1.11 AC.
19	1.11 AC.
20	1.11 AC.
21	1.11 AC.
22	1.11 AC.
23	1.11 AC.
24	1.11 AC.
25	1.11 AC.
26	1.11 AC.
27	1.11 AC.
28	1.11 AC.
29	1.11 AC.
30	1.11 AC.
31	1.11 AC.
32	1.11 AC.
33	1.11 AC.
34	1.11 AC.
35	1.11 AC.
36	1.11 AC.
37	1.11 AC.
38	1.11 AC.
39	1.11 AC.
40	1.11 AC.
41	1.11 AC.
42	1.11 AC.
43	1.11 AC.
44	1.11 AC.
45	1.11 AC.
46	1.11 AC.
47	1.11 AC.
48	1.11 AC.
49	1.11 AC.
50	1.11 AC.
51	1.11 AC.
52	1.11 AC.
53	1.11 AC.
54	1.11 AC.
55	1.11 AC.
56	1.11 AC.
57	1.11 AC.
58	1.11 AC.
59	1.11 AC.
60	1.11 AC.
61	1.11 AC.
62	1.11 AC.
63	1.11 AC.
64	1.11 AC.
65	1.11 AC.
66	1.11 AC.
67	1.11 AC.
68	1.11 AC.
69	1.11 AC.
70	1.11 AC.
71	1.11 AC.
72	1.11 AC.
73	1.11 AC.
74	1.11 AC.
75	1.11 AC.
76	1.11 AC.
77	1.11 AC.
78	1.11 AC.
79	1.11 AC.
80	1.11 AC.
81	1.11 AC.
82	1.11 AC.
83	1.11 AC.
84	1.11 AC.
85	1.11 AC.
86	1.11 AC.
87	1.11 AC.
88	1.11 AC.
89	1.11 AC.
90	1.11 AC.
91	1.11 AC.
92	1.11 AC.
93	1.11 AC.
94	1.11 AC.
95	1.11 AC.
96	1.11 AC.
97	1.11 AC.
98	1.11 AC.
99	1.11 AC.
100	1.11 AC.



GREEN SHOOTING CENTER
MILWAUKEE, WI. PHONE 384-2100

LOT	ACRES
1	1.11 AC.
2	2.42 AC.
3	1.11 AC.
4	1.11 AC.
5	1.11 AC.
6	1.11 AC.
7	1.11 AC.
8	1.11 AC.
9	1.11 AC.
10	1.11 AC.
11	1.11 AC.
12	1.11 AC.
13	1.11 AC.
14	1.11 AC.
15	1.11 AC.
16	1.11 AC.
17	1.11 AC.
18	1.11 AC.
19	1.11 AC.
20	1.11 AC.
21	1.11 AC.
22	1.11 AC.
23	1.11 AC.
24	1.11 AC.
25	1.11 AC.
26	1.11 AC.
27	1.11 AC.
28	1.11 AC.
29	1.11 AC.
30	1.11 AC.
31	1.11 AC.
32	1.11 AC.
33	1.11 AC.
34	1.11 AC.
35	1.11 AC.
36	1.11 AC.
37	1.11 AC.
38	1.11 AC.
39	1.11 AC.
40	1.11 AC.
41	1.11 AC.
42	1.11 AC.
43	1.11 AC.
44	1.11 AC.
45	1.11 AC.
46	1.11 AC.
47	1.11 AC.
48	1.11 AC.
49	1.11 AC.
50	1.11 AC.
51	1.11 AC.
52	1.11 AC.
53	1.11 AC.
54	1.11 AC.
55	1.11 AC.
56	1.11 AC.
57	1.11 AC.
58	1.11 AC.
59	1.11 AC.
60	1.11 AC.
61	1.11 AC.
62	1.11 AC.
63	1.11 AC.
64	1.11 AC.
65	1.11 AC.
66	1.11 AC.
67	1.11 AC.
68	1.11 AC.
69	1.11 AC.
70	1.11 AC.
71	1.11 AC.
72	1.11 AC.
73	1.11 AC.
74	1.11 AC.
75	1.11 AC.
76	1.11 AC.
77	1.11 AC.
78	1.11 AC.
79	1.11 AC.
80	1.11 AC.
81	1.11 AC.
82	1.11 AC.
83	1.11 AC.
84	1.11 AC.
85	1.11 AC.
86	1.11 AC.
87	1.11 AC.
88	1.11 AC.
89	1.11 AC.
90	1.11 AC.
91	1.11 AC.
92	1.11 AC.
93	1.11 AC.
94	1.11 AC.
95	1.11 AC.
96	1.11 AC.
97	1.11 AC.
98	1.11 AC.
99	1.11 AC.
100	1.11 AC.

E.



283.57'

LOT 7

1.7700°

K. WEICHT 212/110
F 9 - 22.30

221.22'

N 72°33'19" W

335.76'

S 72°33'19" E

192.59'

S 35°46'06" W

114.53'

S 45°50'53" W

NORTH CRESTWOOD DRIVE

92.78'

S 45°50'53" W

78.45'

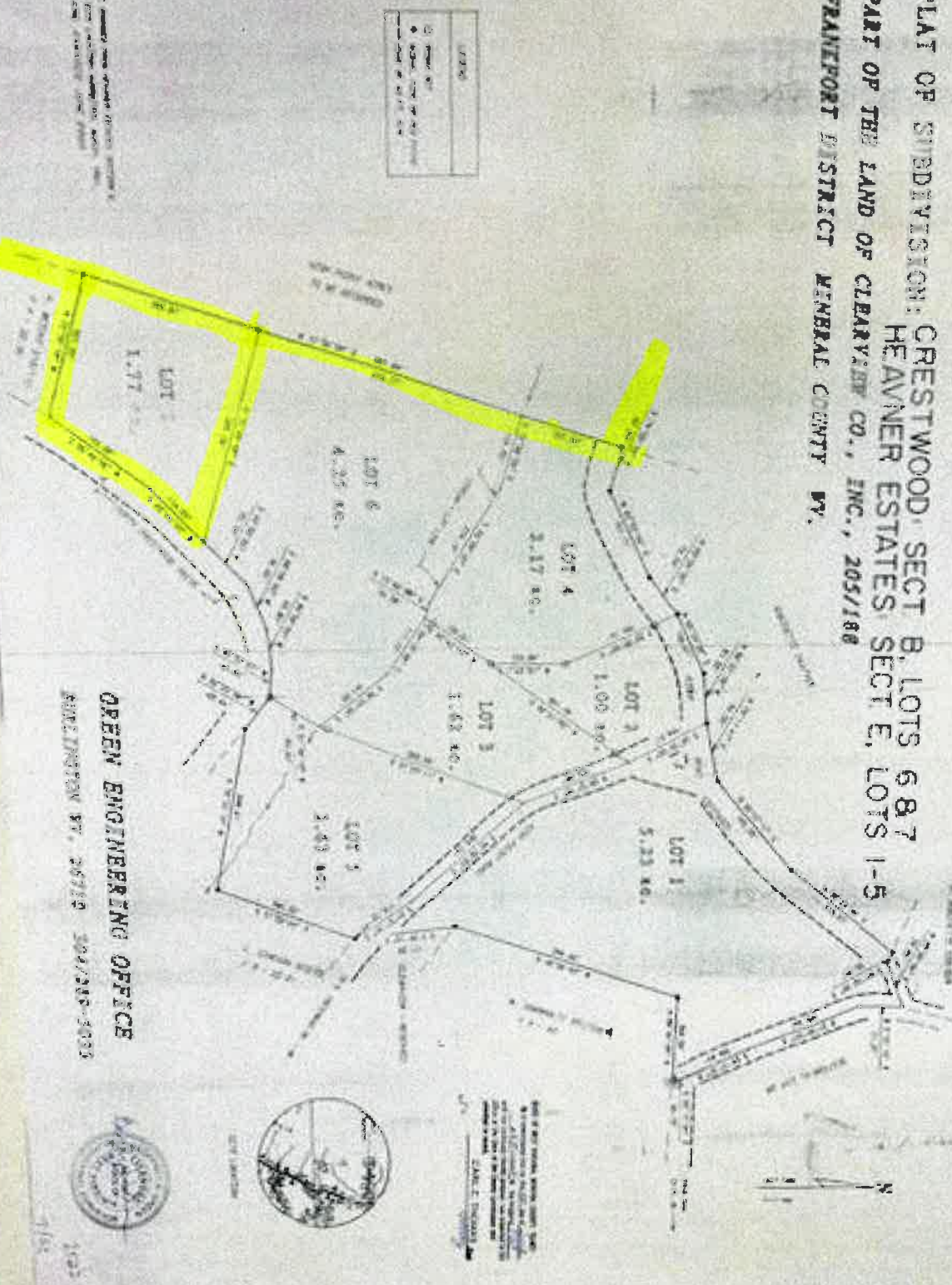
S 68°05'53" W

65.85'

S 45°53" W

N 83°29'00"

PLAT OF SUBDIVISION: CRESTWOOD, SECT. B, LOTS 6 & 7
 PART OF THE LAND OF CLEARVIEW CO., INC., 205/188
 FRANKFORT DISTRICT, MINERAL COUNTY, WY.



SYMBOL	DESCRIPTION
(Symbol)	...
(Symbol)	...

GREEN ENGINEERING OFFICE
 RENO, NEVADA 89502



THIS PLAT AND THE SUBDIVISION THEREON ARE HEREBY OFFICIALLY RECORDED AND THE PUBLIC NOTICE IS HEREBY GIVEN THAT THE SAME ARE THE PROPERTY OF THE STATE OF NEVADA AND ARE NOT TO BE USED FOR ANY OTHER PURPOSE WITHOUT THE WRITTEN CONSENT OF THE STATE ENGINEER.

1025
 7/88