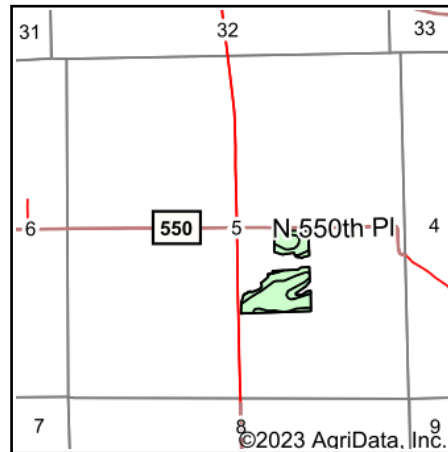
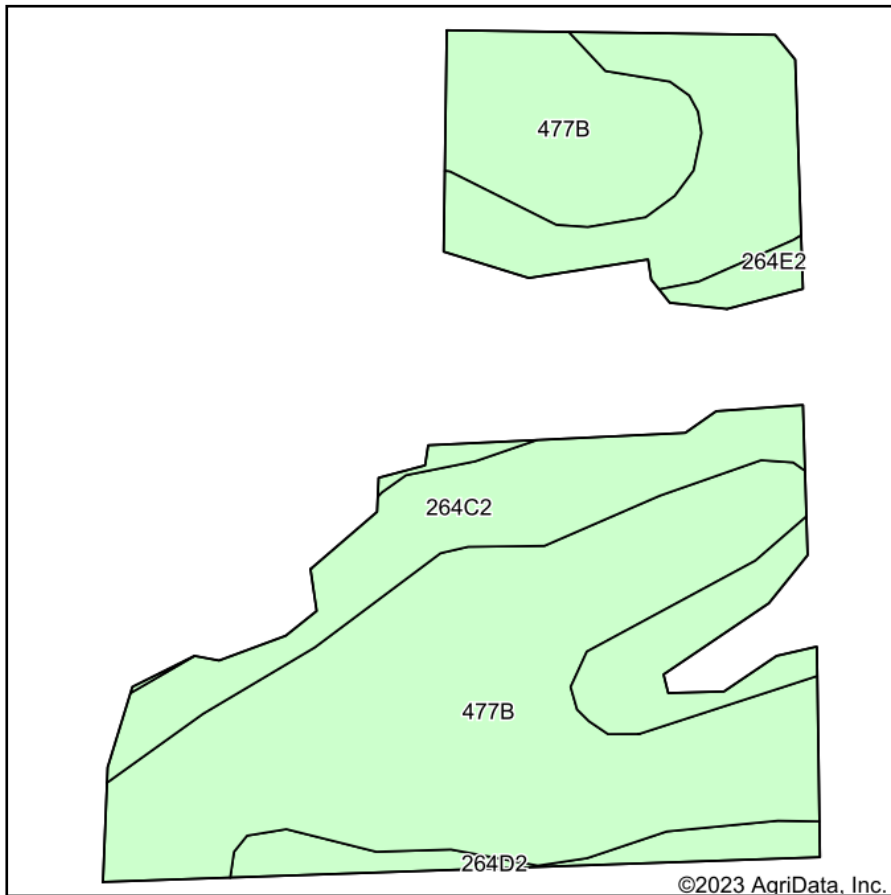


Soils Map



State: **Illinois**
 County: **Adams**
 Location: **5-3S-6W**
 Township: **Richfield**
 Acres: **17.97**
 Date: **4/15/2023**

Maps Provided By:

 © AgriData, Inc. 2023 www.AgriDataInc.com



Soils data provided by USDA and NRCS.

Area Symbol: IL001, Soil Area Version: 21

Code	Soil Description	Acres	Percent of field	Subsoil rooting a	Corn Bu/A	Soybeans Bu/A	Wheat Bu/A	Oats Bu/A b	Sorghum c Bu/A	Alfalfa d hay, T/A	Grass-legume e hay, T/A	Crop productivity index for optimum management
**477B	Winfield silt loam, 2 to 5 percent slopes	10.66	59.3%	FAV	**160	**50	**62	0	**122	**4.97	0.00	**118
**264C2	El Dara silt loam, 5 to 10 percent slopes, eroded	6.12	34.1%	FAV	**126	**42	**54	**60	0	**3.03	0.00	**94
**264D2	El Dara silt loam, 10 to 18 percent slopes, eroded	0.80	4.5%	FAV	**121	**40	**52	**57	0	**2.90	0.00	**90
**264E2	El Dara sandy loam, 18 to 25 percent slopes, eroded	0.39	2.2%	FAV	**102	**34	**44	**48	0	**2.45	0.00	**76
Weighted Average					145.4	46.5	58.4	24	72.4	4.16	0.00	107.7

Table: Optimum Crop Productivity Ratings for Illinois Soil by K.R. Olson and J.M. Lang, Office of Research, ACES, University of Illinois at Champaign-Urbana. Version: 1/2/2012 Amended Table S2 B811

Crop yields and productivity indices for optimum management (B811) are maintained at the following NRES web site: <http://soilproductivity.nres.illinois.edu/>

** Indexes adjusted for slope and erosion according to Bulletin 811 Table S3

a UNF = unfavorable; FAV = favorable

b Soils in the southern region were not rated for oats and are shown with a zero "0".

c Soils in the northern region or in both regions were not rated for grain sorghum and are shown with a zero "0".

d Soils in the poorly drained group were not rated for alfalfa and are shown with a zero "0".

e Soils in the well drained group were not rated for grass-legume and are shown with a zero "0".

Soils data provided by USDA and NRCS. Soils data provided by University of Illinois at Champaign-Urbana.