

3P Ranch – Horse Haven

6722 N Hwy 36, Buckholts, TX 76518 • Milam County



Jan Gunter

REALTOR®
Texas Land Specialist

512-944-0572
jan.gunter@kw.com
jangunter.kw.com

Keller Williams Realty
1801 S Mopac Expy
Austin, TX 78746



+/-113.5 Acres • \$2,550,000

3P Ranch is an exceptional event facility and a haven for horse enthusiasts, conveniently located on Hwy 36/US 190 only 20 miles from Temple, TX. Spanning 113 acres, this remarkable property offers all the essential amenities for horses, cattle, homestead living, recreation, or commercial purposes. The crown jewel of this ranch is the expansive 45,000 sq. ft. covered arena complete with holding pens, a manual chute, an announcer's box, and a concession stand. Additionally, a spacious shop/utility building with plumbing, electricity, heating, and cooling provides a versatile space with endless possibilities. The property boasts fenced and cross-fenced coastal Bermuda and native pastures, four picturesque ponds, a pole barn, horse training arena, and serene woods. The 4-bedroom house is nestled in the back half of the property making this a true country getaway in an ideal location with easy access to Austin, Temple, Waco, and Bryan/College Station.



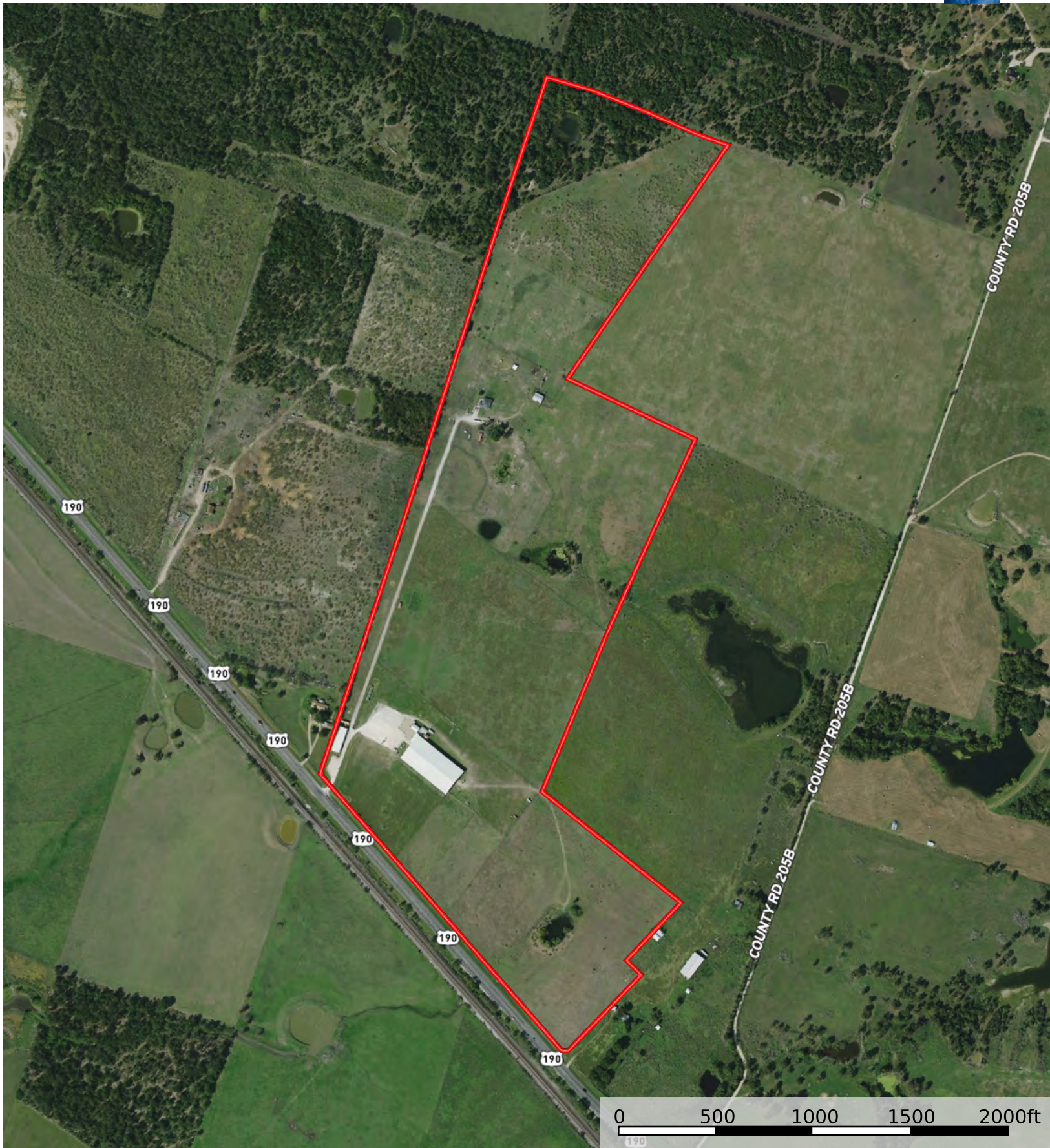
kw AUSTIN SW
KELLERWILLIAMS. REALTY

All information provided is deemed reliable but is not guaranteed and should be independently verified. If you have a brokerage relationship with another agency, this material is not intended as a solicitation. Each Keller Williams office is independently owned and operated.

KELLERWILLIAMS
LAND

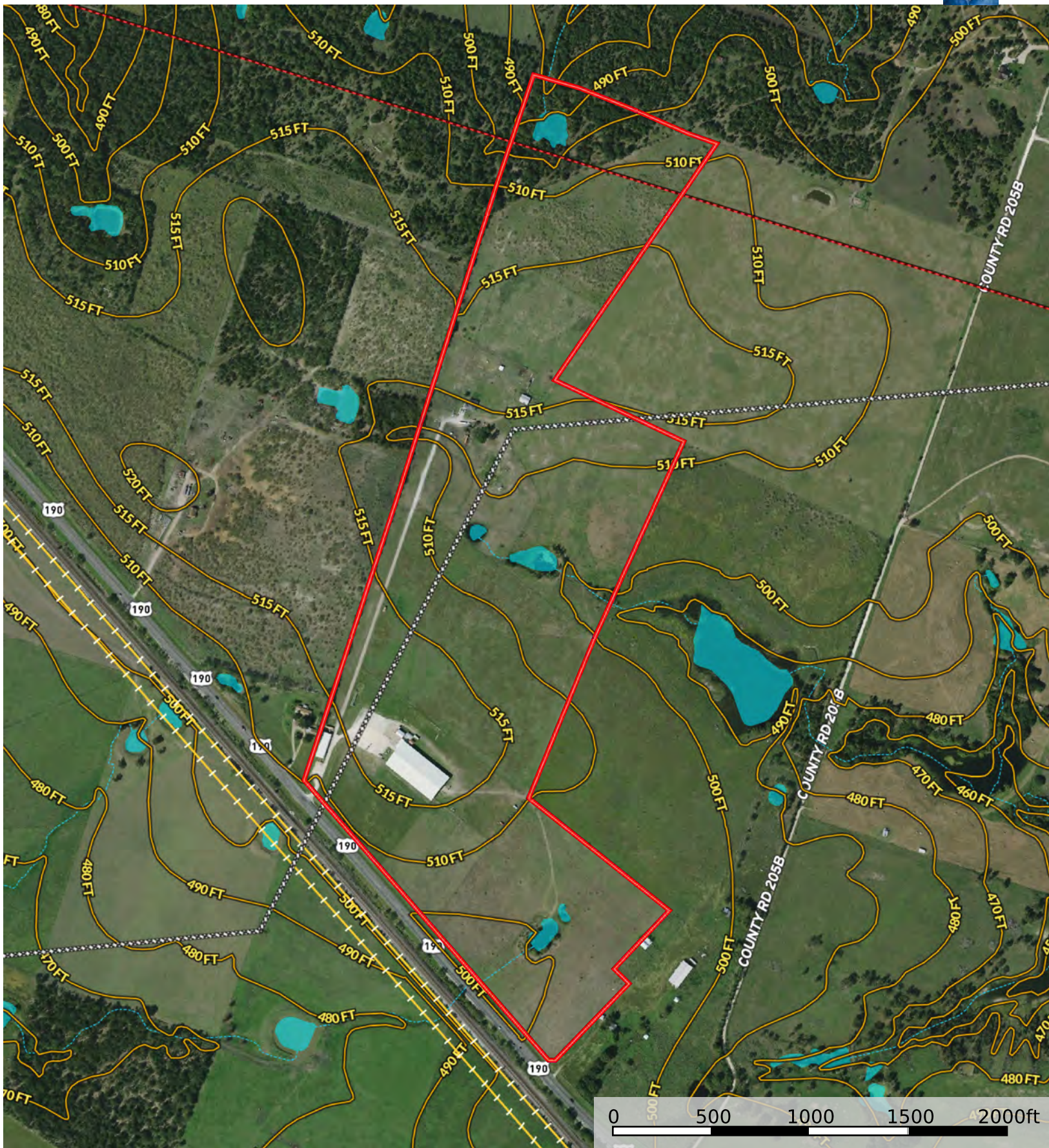
3P Ranch

Milam County, Texas, 113.54 AC +/-



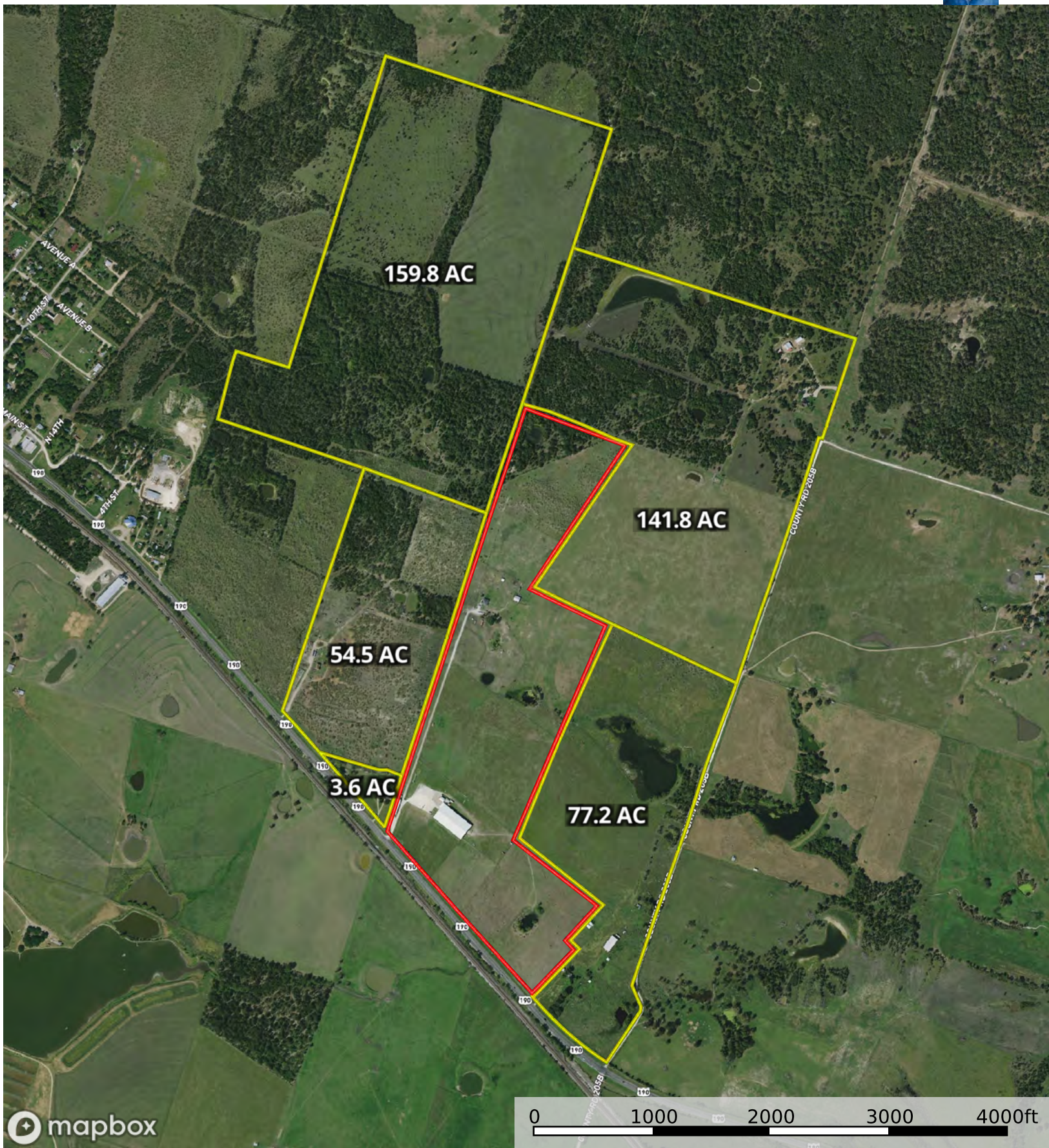
 Boundary

3P Ranch
 Milam County, Texas, 113.54 AC +/-



3P Ranch - Neighbors

Milam County, Texas, 113.54 AC +/-



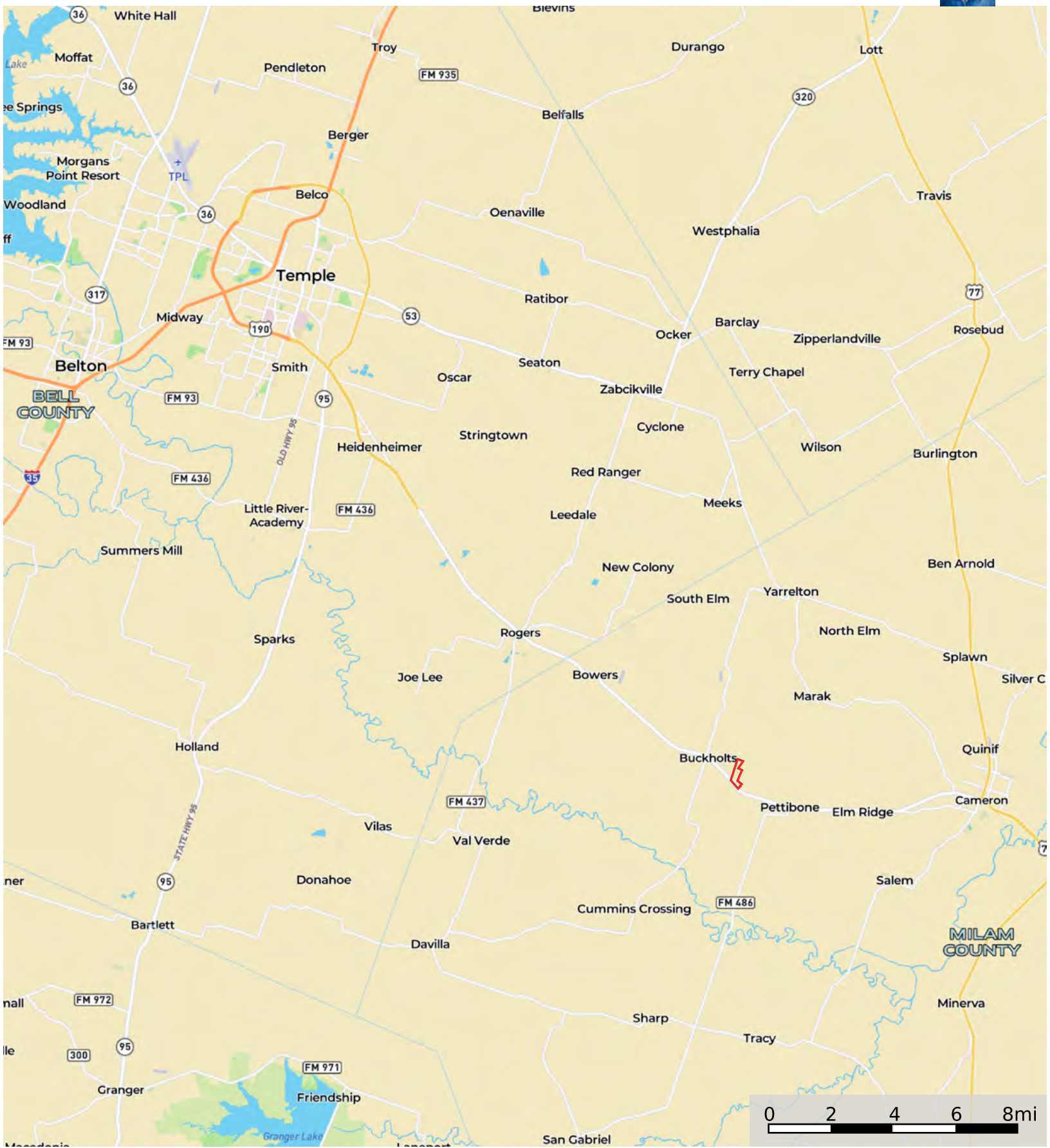
Boundary Neighbor



- Boundary
- Unified Sch. Dist.
- Secondary Sch. Dist.
- Elementary Sch. Dist.

3P Ranch

Milam County, Texas, 113.54 AC +/-



Boundary

Jan Gunter

P: 512-944-0572

jan.gunter@kw.com

The information contained herein was obtained from sources deemed to be reliable. Land id™ Services makes no warranties or guarantees as to the completeness or accuracy thereof.