



BLOOMING OAKS RANCH
25120 Staggs Ranch Rd, Elmendorf, TX
100 Acres | \$1,900,000



Copyright 2023 Grand Land Realty, LLC
The material contained in this document is based in part upon information furnished to Grand Land Realty, LLC. by sources deemed to be reliable. The information is believed to be accurate in all material respects, but no representation or warranty, expressed, or implied, as to list accuracy or completeness is made by any party. Recipients should conduct their own investigation and analysis of the information described herein.



Dustin Preston
Realtor®- Land Specialist
dpreston@grandland.com
(281) 787-5401

PROPERTY DESCRIPTION

The Blooming Oaks Ranch is a secluded, 100-acre ranch located approximately 20 miles South of San Antonio, TX. An equal mixture of grazeable pasture, oak motts, and brush country provides excellent habitat for the wildlife and cattle that traverse the property. You'll find two tanks on the property, one fed by an irrigation well. There is more than 40' of elevation change that offers the perfect hill country views you have been looking for. Accompanying the land is a 1200 sq. ft. 3-bedroom, 2-bath farmhouse. This is an excellent property for a weekend escape out of the city. It would also serve as a great investment being so close to San Antonio. Either way, it will not disappoint.

The Blooming Oaks Ranch offers 100 acres of a great mixture of pastureland and brush country. More than 40' of elevation change provides the perfect hill country views you have been looking for. There are two medium-sized tanks on the property, one being fed by an irrigation well. You'll find an abundance of Live Oak, Mesquite, KR Bluestem, Bahia, Rye Grass, and other native trees and grasses.

The property has 5-strand barbed wire on the perimeter and cross-fencing in several areas. To accompany the land, there is a 1200 sq. ft. home that has been remodeled since its original build. It's a 3-bedroom, 2-bath house with a solid foundation. Behind the home, you'll find a large barn for tractor, implement, and vehicle storage. There are two water wells on the property—one irrigation and one that supplies the house. You'll find a 1200 sq. ft. home that has been remodeled since its original build. Behind the home is a newer open-sided barn that currently stores a tractor, implements, and a farm truck.

Copyright 2023 Grand Land Realty, LLC
The material contained in this document is based in part upon information furnished to Grand Land Realty, LLC. by sources deemed to be reliable. The information is believed to be accurate in all material respects, but no representation or warranty, expressed, or implied, as to list accuracy or completeness is made by any party. Recipients should conduct their own investigation and analysis of the information described herein.



Dustin Preston
Realtor®- Land Specialist
dpreston@grandland.com
(281) 787-5401





SCAN HERE TO SEE MORE OF
BLOOMING OAKS RANCH

LOCATION

Bexar County

19 miles to Floresville, 20 Miles to San Antonio, 55 miles to New Braunfels, 120 miles to Corpus Christi.

DIRECTIONS

From San Antonio take I-37 south. Take exit 120 for Hardy Rd, follow Hardy Rd for 3.9 miles to Staggs Ranch Rd. Property will be straight ahead at the bend of Staggs Ranch Rd in 0.3 miles.

Copyright 2023 Grand Land Realty, LLC
The material contained in this document is based in part upon information furnished to Grand Land Realty, LLC. by sources deemed to be reliable. The information is believed to be accurate in all material respects, but no representation or warranty, expressed, or implied, as to list accuracy or completeness is made by any party. Recipients should conduct their own investigation and analysis of the information described herein.

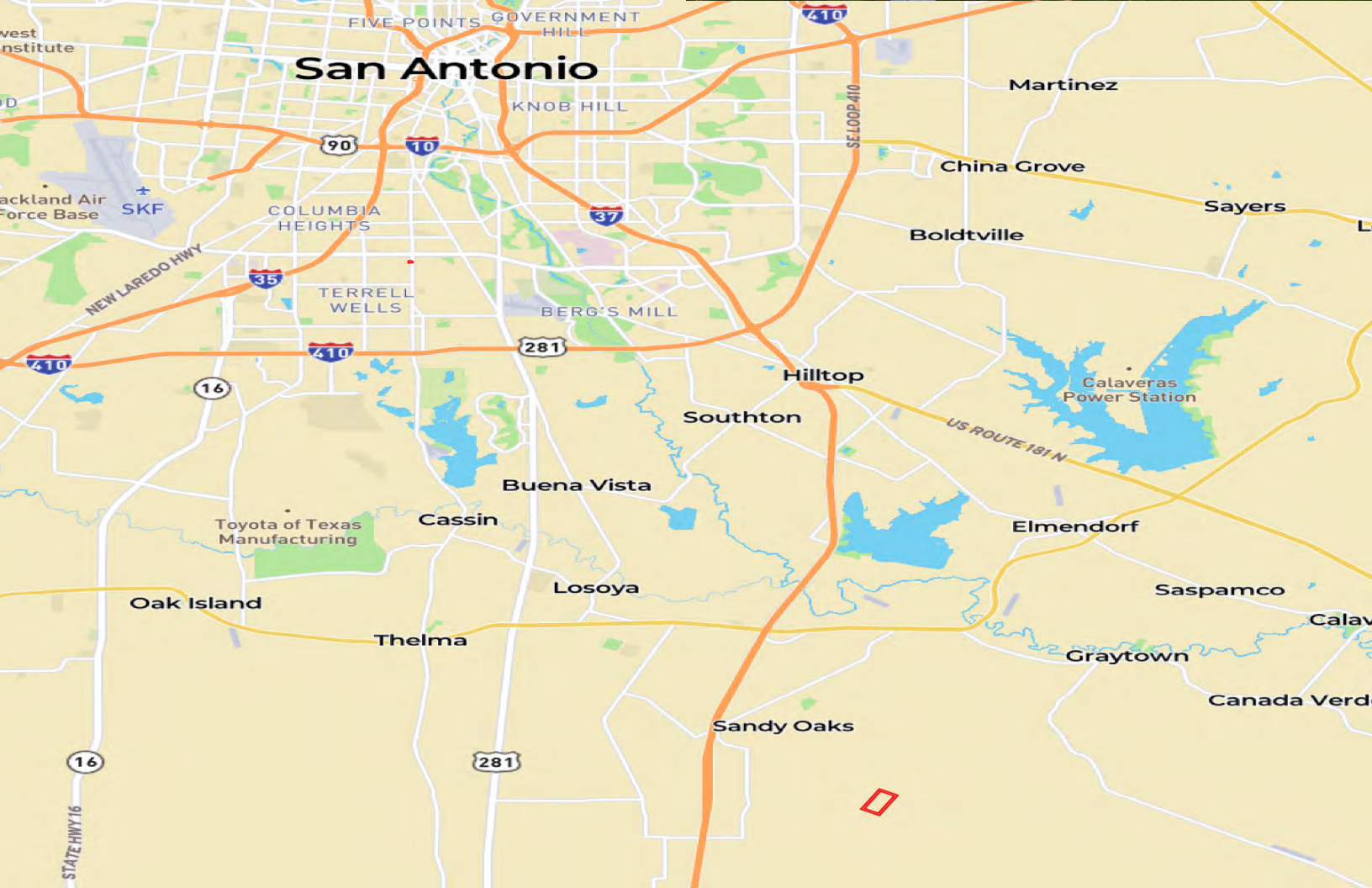


Dustin Preston

Realtor®- Land Specialist

dpreston@grandland.com

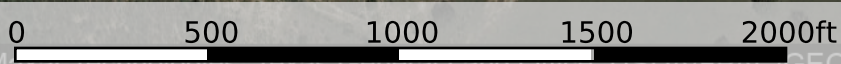
(281) 787-5401



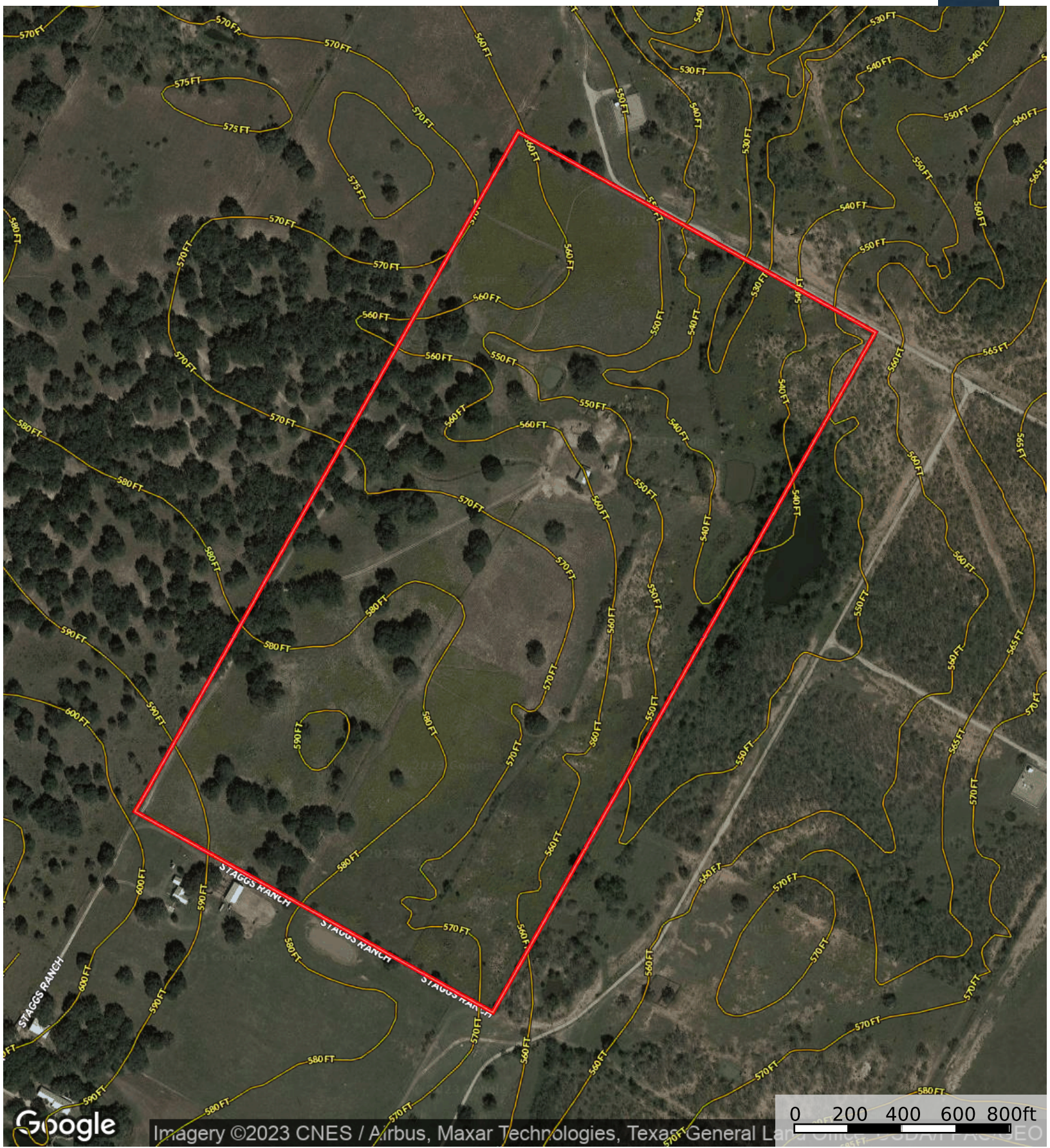


Google

Imagery ©2023 CNES / Airbus, Maxar Technologies, Texas General Land Office, USDA/NRCS/Geo



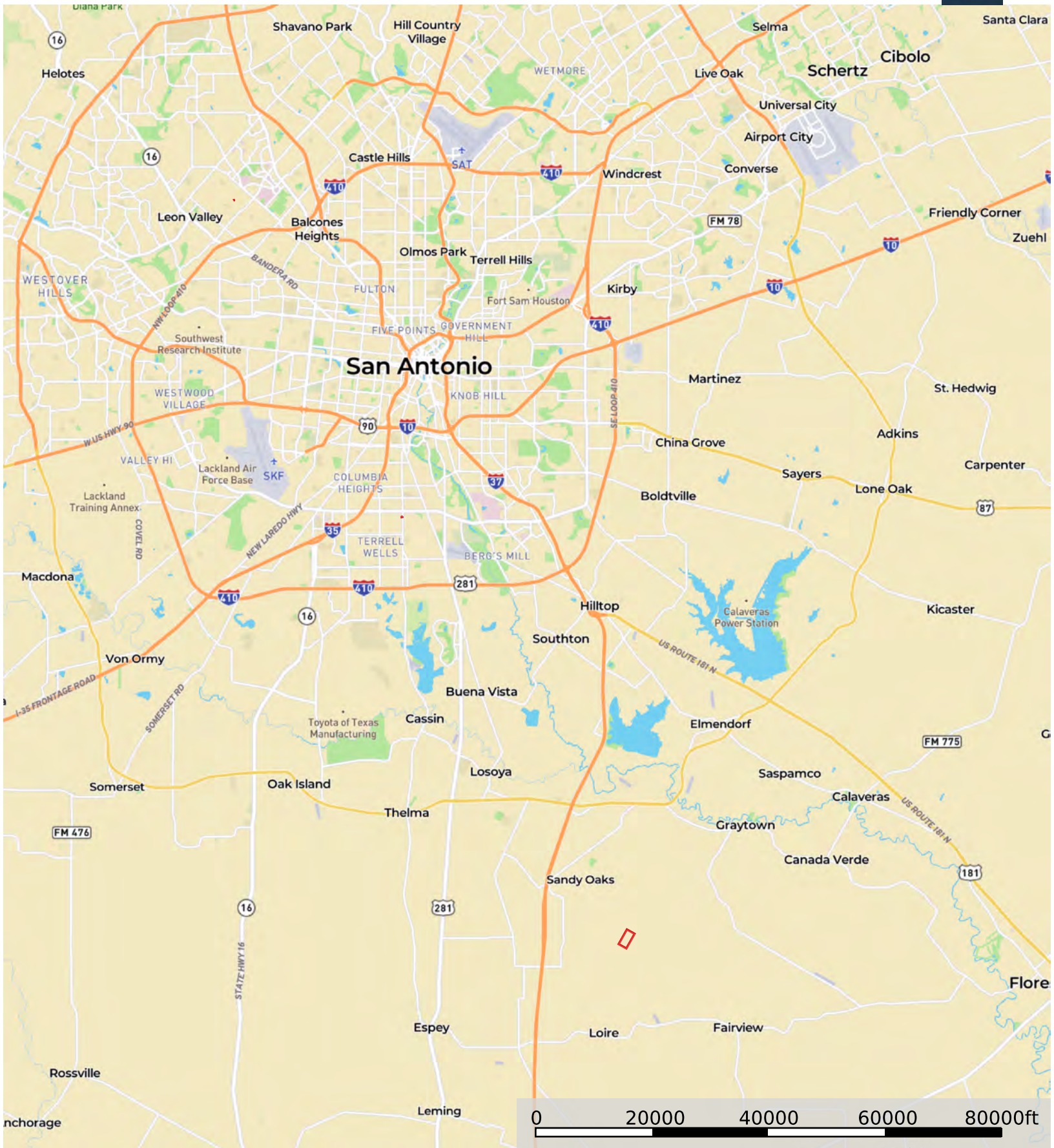
Boundary



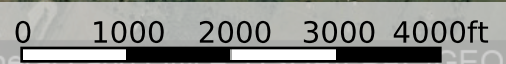
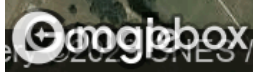
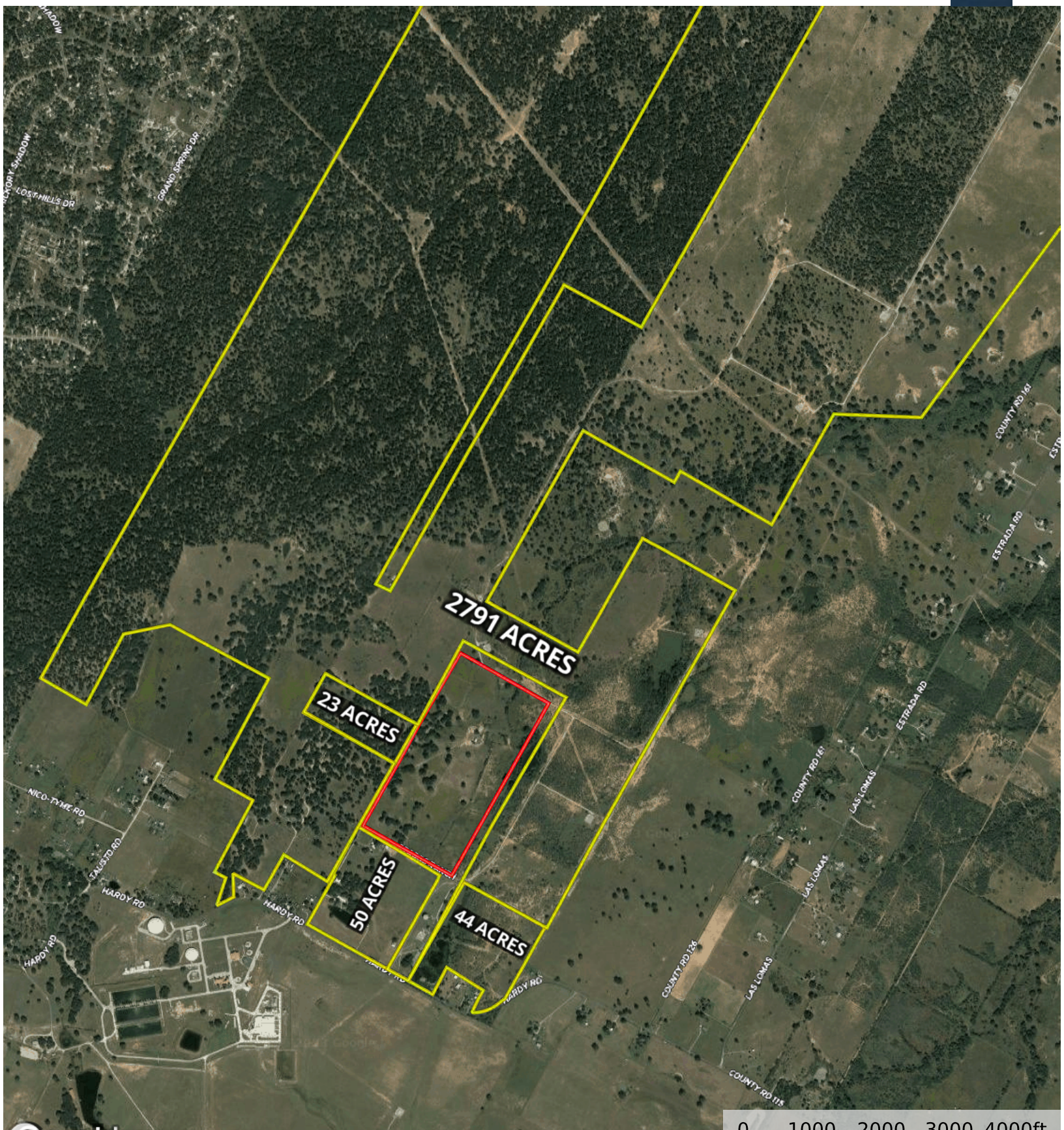
Boundary

25120 Staggs Ranch Rd, Elmendorf, TX

Bexar County, Texas, 100.77 AC +/-



Boundary



Boundary 1 Boundary