





**SURVEY OF DUNMORE RIDGE PARK, SECTION 2**  
**LOT NOS. 1 THROUGH 30**  
**TOTAL AREA = 114.977 ACRES**  
**SHERMAN DISTRICT**  
**HAMPSHIRE COUNTY, WEST VIRGINIA**  
**TAX MAP 11 PART OF PARCEL 30**

MAGNETIC DECLINATION OBSERVED BY MEASUREMENT ON JUNE 8, 1909, AT LATITUDE 39° 15' 15" N. LONGITUDE 78° 57' 29" W. WAS 11.50'. THE MAGNETIC DECLINATION AT THE TIME OF THIS SURVEY WAS COMPUTED FROM THE MAGNETIC DECLINATION AND DISTANCE FROM THE MAGNETIC MERIDIAN AS DISTANCE ON HORIZONTAL PLANE. THIS SURVEY WAS COMPLETED ON JUNE 7, 1909.

- LEASING**
- CORNER NO. 1 IS A 1/2 INCH IRON ROD, FOUND AT THE BASE OF A LOGPOST TREE.
  - CORNER NO. 2 IS A 1/2 INCH IRON ROD, FOUND AT THE BASE OF A LOGPOST TREE.
  - CORNER NO. 3 IS A 3/4 INCH IRON ROD, FOUND AT THE BASE OF A LOGPOST TREE.
  - CORNER NO. 4 IS A 3/4 INCH IRON ROD, FOUND AT THE BASE OF A LOGPOST TREE.
  - CORNER NO. 5 IS A 3/4 INCH IRON ROD, FOUND AT THE BASE OF A LOGPOST TREE.
  - CORNER NO. 6 IS A 3/4 INCH IRON ROD, FOUND AT THE BASE OF A LOGPOST TREE.
  - CORNER NO. 7 IS A 3/4 INCH IRON ROD, FOUND AT THE BASE OF A LOGPOST TREE.
  - CORNER NO. 8 IS A 3/4 INCH IRON ROD, FOUND AT THE BASE OF A LOGPOST TREE.
  - CORNER NO. 9 IS A 3/4 INCH IRON ROD, FOUND AT THE BASE OF A LOGPOST TREE.
  - CORNER NO. 10 IS A 3/4 INCH IRON ROD, FOUND AT THE BASE OF A LOGPOST TREE.
  - CORNER NO. 11 IS A 3/4 INCH IRON ROD, FOUND AT THE BASE OF A LOGPOST TREE.
  - CORNER NO. 12 IS A 3/4 INCH IRON ROD, FOUND AT THE BASE OF A LOGPOST TREE.
  - CORNER NO. 13 IS A 3/4 INCH IRON ROD, FOUND AT THE BASE OF A LOGPOST TREE.
  - CORNER NO. 14 IS A 3/4 INCH IRON ROD, FOUND AT THE BASE OF A LOGPOST TREE.
  - CORNER NO. 15 IS A 3/4 INCH IRON ROD, FOUND AT THE BASE OF A LOGPOST TREE.
  - CORNER NO. 16 IS A 3/4 INCH IRON ROD, FOUND AT THE BASE OF A LOGPOST TREE.
  - CORNER NO. 17 IS A 3/4 INCH IRON ROD, FOUND AT THE BASE OF A LOGPOST TREE.
  - CORNER NO. 18 IS A 3/4 INCH IRON ROD, FOUND AT THE BASE OF A LOGPOST TREE.
  - CORNER NO. 19 IS A 3/4 INCH IRON ROD, FOUND AT THE BASE OF A LOGPOST TREE.
  - CORNER NO. 20 IS A 3/4 INCH IRON ROD, FOUND AT THE BASE OF A LOGPOST TREE.
  - CORNER NO. 21 IS A 3/4 INCH IRON ROD, FOUND AT THE BASE OF A LOGPOST TREE.
  - CORNER NO. 22 IS A 3/4 INCH IRON ROD, FOUND AT THE BASE OF A LOGPOST TREE.
  - CORNER NO. 23 IS A 3/4 INCH IRON ROD, FOUND AT THE BASE OF A LOGPOST TREE.
  - CORNER NO. 24 IS A 3/4 INCH IRON ROD, FOUND AT THE BASE OF A LOGPOST TREE.
  - CORNER NO. 25 IS A 3/4 INCH IRON ROD, FOUND AT THE BASE OF A LOGPOST TREE.
  - CORNER NO. 26 IS A 3/4 INCH IRON ROD, FOUND AT THE BASE OF A LOGPOST TREE.
  - CORNER NO. 27 IS A 3/4 INCH IRON ROD, FOUND AT THE BASE OF A LOGPOST TREE.
  - CORNER NO. 28 IS A 3/4 INCH IRON ROD, FOUND AT THE BASE OF A LOGPOST TREE.
  - CORNER NO. 29 IS A 3/4 INCH IRON ROD, FOUND AT THE BASE OF A LOGPOST TREE.
  - CORNER NO. 30 IS A 3/4 INCH IRON ROD, FOUND AT THE BASE OF A LOGPOST TREE.

- ALL POINTS IN THE CENTER LINE OF THE RIGHTS OF WAY ARE CALCULATED POINTS.
- FLUSH 5/8 INCH CHIPPED IRON RODS ARE SET ON LINE AT 25 FEET FROM THE CENTER LINE OF EACH RIGHT OF WAY EXCEPT WHERE SHOWN OTHERWISE ON THE PLAN.
- ALL OTHER DIMENSIONS CORNERS ARE FLUSH 5/8 INCH CHIPPED IRON RODS, SET.
- APPROXIMATE LOCATIONS OF ADJOINING PROPERTY BOUNDARY LINES.
- APPROXIMATE BOUNDS OF AN ADJOINING RIGHT OF WAY 7 1/2 FEET ALIGHT OF WAY.
- APPROXIMATE BOUNDS OF ADJOINING WIDE RIGHTS OF WAY WITHIN SUBDIVISION.

**METERS OF EARL V. BEERY**  
 129 ACRES  
 DB 208 PG 70B

**JAMES R. HAINES**  
 DB 240 PG 10B

**JOSEPH REILLY**  
 DB 236 PG 20A  
 119 ACRES

**DUNMORE RIDGE PARK**  
 SECTION 2  
 SEE MAP BOOK 9 PAGE 50  
 SEE PLAT NO. 082-023



**JAMES R. HAINES**  
 DB 240 PG 10B

**JOSEPH REILLY**  
 DB 236 PG 20A  
 119 ACRES

**DUNMORE RIDGE PARK**  
 SECTION 2  
 SEE MAP BOOK 9 PAGE 50  
 SEE PLAT NO. 082-023

STATE OF WEST VIRGINIA, County of Hampshire, ss: I, *John R. Haines*, Clerk of the County of Hampshire, do hereby certify that the foregoing is a true and correct copy of the original plat of the Survey of Dunmore Ridge Park, Section 2, as shown to me by the Surveyor of said County.

*John R. Haines*  
 Clerk of the County of Hampshire, West Virginia

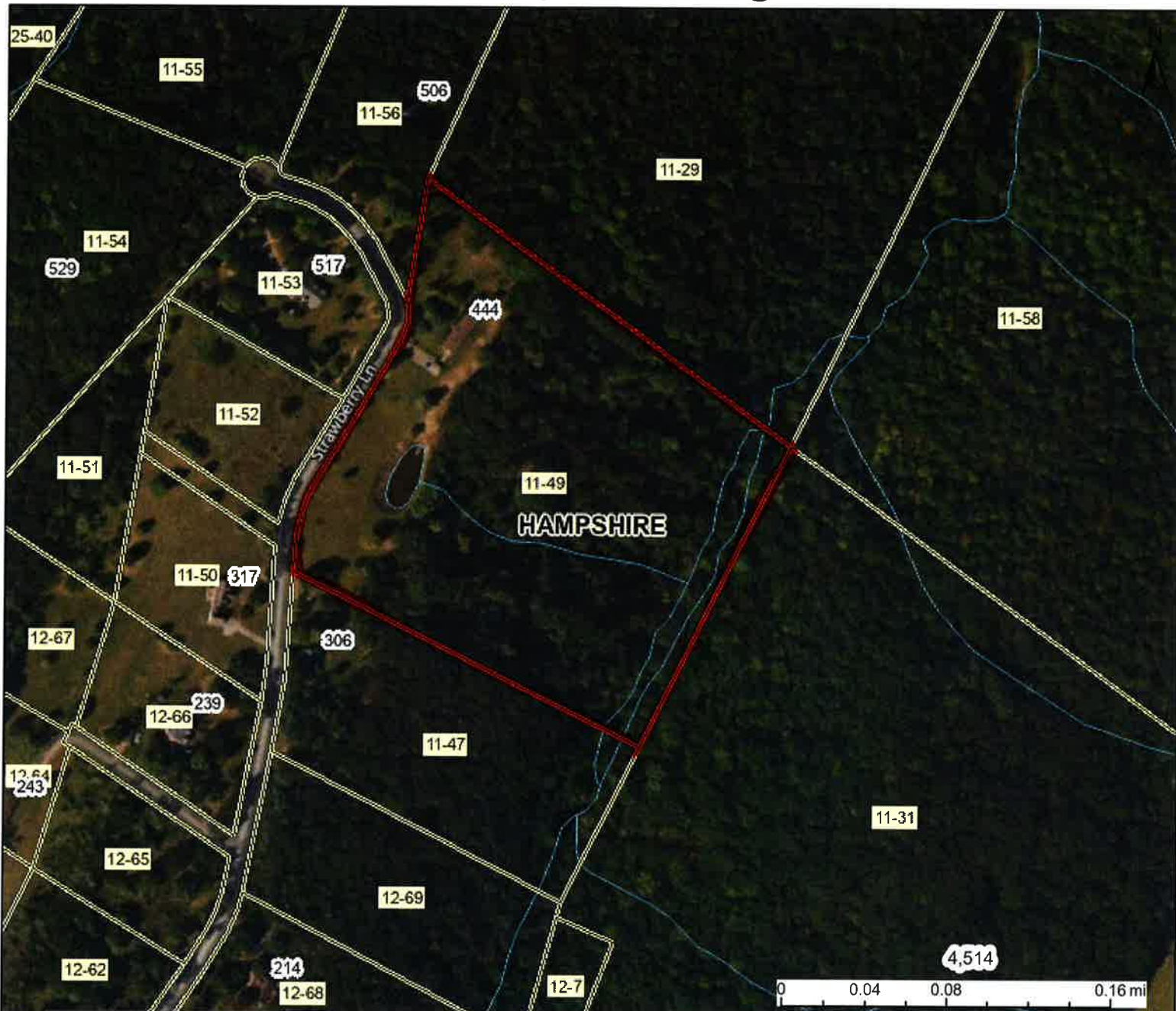
<b>DUNMORE RIDGE PARK - SECTION 2</b>	
DAY & LOVELL ENTERPRISES, INC.	FILE NO. 204
FIDELITY & SECURITY COMPANY OF AMERICA	DATE 11/1/09
TITLE: REMAINDER OF A 240.35 AC. TRACT OWNED BY JOSEPH YSKALCZYK, DEED 20/10/06	








JOHN R. HAINES  
 SURVEYOR

DATE 11/1/09

# 444 Strawberry Lane, Augusta



This map is not the official regulatory FIRM or DFIRM. Its purpose is to assist with determining potential flood risk for the selected location.

<p>H I G H  R I S K</p> <p> Regulatory Floodway</p> <p> 1-Percent-Annual-Chance Flood Hazard Area <b>With Base Flood Elevation (BFE)</b></p> <p> 1-Percent-Annual-Chance Flood Hazard Area <b>Without BFE (may have Advisory Flood Heights)</b></p> <p> 1-Percent-Annual-Chance Future Conditions (High Risk Advisory Flood Zones)</p> <p>Download the Full Legend for all flood tool symbols  <a href="https://www.mapwv.gov/flood/map/docs/wv_flood_tool_legend.pdf">https://www.mapwv.gov/flood/map/docs/wv_flood_tool_legend.pdf</a></p> <p><b>Disclaimer:</b>          The online map is for use in administering the National Flood Insurance Program. It does not necessarily identify all areas subject to flooding, particularly from local drainage sources of small size. Refer to the official Flood Insurance Study (FIS) for detailed flood elevation data in flood profiles and data tables. WV Flood Tool (<a href="https://www.MapWV.gov/flood">https://www.MapWV.gov/flood</a>) is supported by FEMA, WV NFIP Office, and WV GIS Technical Center.</p>		<p> Flood Info Location <span style="float: right;">Map created on 2/9/2023</span></p> <p><b>User Notes</b></p> <p><b>Flood Hazard Area</b> Location is <b>NOT WITHIN</b> any identified flood hazard area. Unmapped flood hazard areas may be present.</p> <p><b>Flood Zone</b> Out of Flood Zone</p> <p><b>Stream</b></p> <p><b>Watershed (HUC8)</b> Cacapon-Town (2070003)</p> <p><b>Flood Height</b> Flood Height 6a N/A</p> <p><b>Water Depth</b></p> <p><b>Elevation</b> 1316.8 ft (Source: FEMA 2016-17) (NAVD88)</p> <p><b>Community &amp; ID</b> Hampshire County (ID: 540226)</p> <p><b>FEMA Map &amp; Date</b> 54027C0290C; Effective Date: 11/7/2002</p> <p><b>Location (lat, long)</b> (39.258897, -78.604883) (WGS84)</p> <p><b>Parcel ID</b> 14-09-0011-0027-0007</p> <p><b>E-911 Address</b> multiple addresses</p>	
----------------------------------------------------------------------------------------------------------------------------------------------------------------------------------------------------------------------------------------------------------------------------------------------------------------------------------------------------------------------------------------------------------------------------------------------------------------------------------------------------------------------------------------------------------------------------------------------------------------------------------------------------------------------------------------------------------------------------------------------------------------------------------------------------------------------------------------------------------------------------------------------------------------------------------------------------------------------------------------------------------------------------------------------------------------------------------------------------------------------------------------------------------------------------------------------------------------------------------------------------------------------------------------------------------------------------------------------------------------------------------------------------------------------------------------------------------	--	------------------------------------------------------------------------------------------------------------------------------------------------------------------------------------------------------------------------------------------------------------------------------------------------------------------------------------------------------------------------------------------------------------------------------------------------------------------------------------------------------------------------------------------------------------------------------------------------------------------------------------------------------------------------------------------------------------------------------------------------------------------------------------------------------------------------------------------------------------------------------------------------------------------------	--