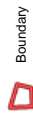
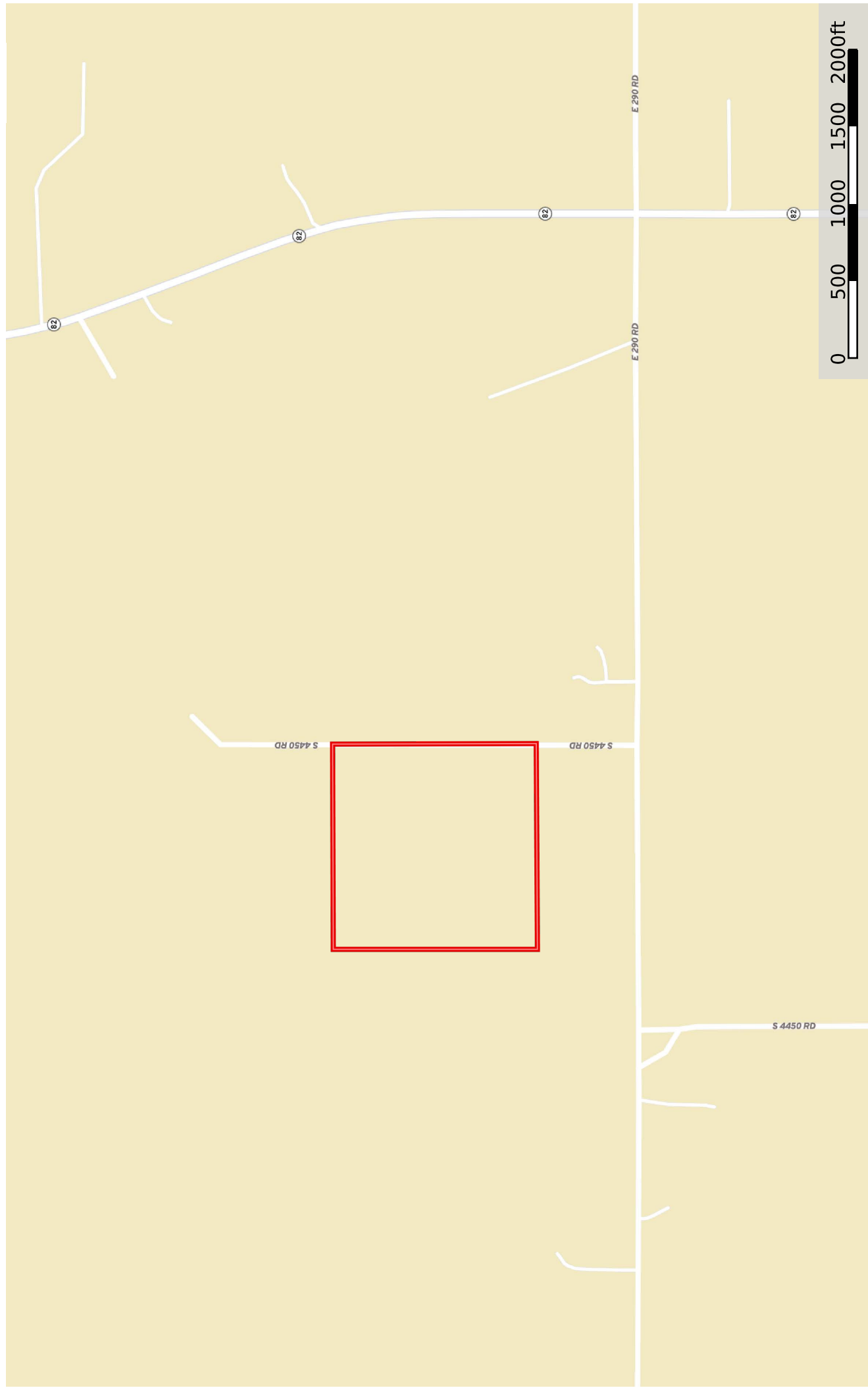
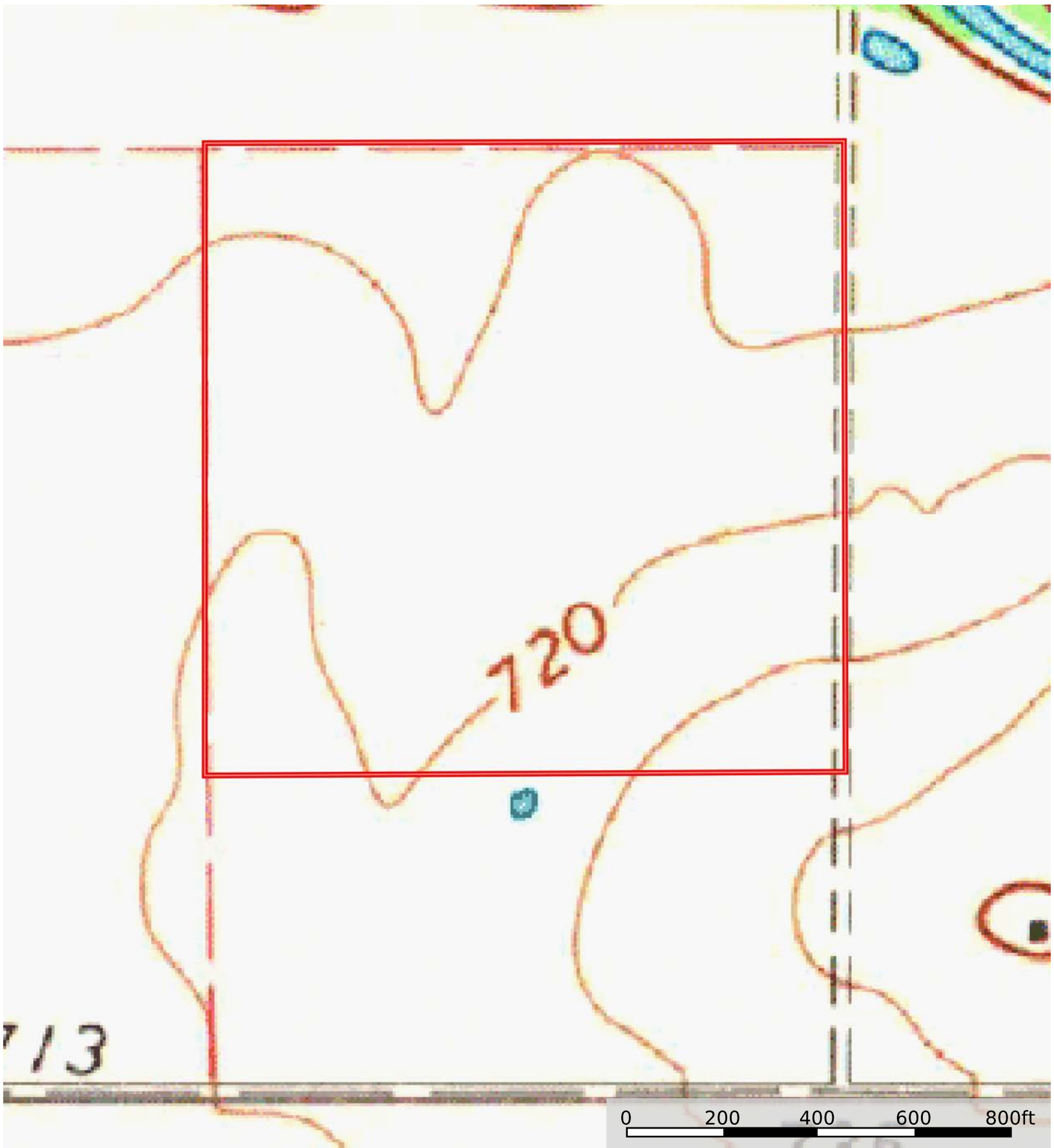



Winfrey 40 ac- Vinita
Oklahoma, AC +/-

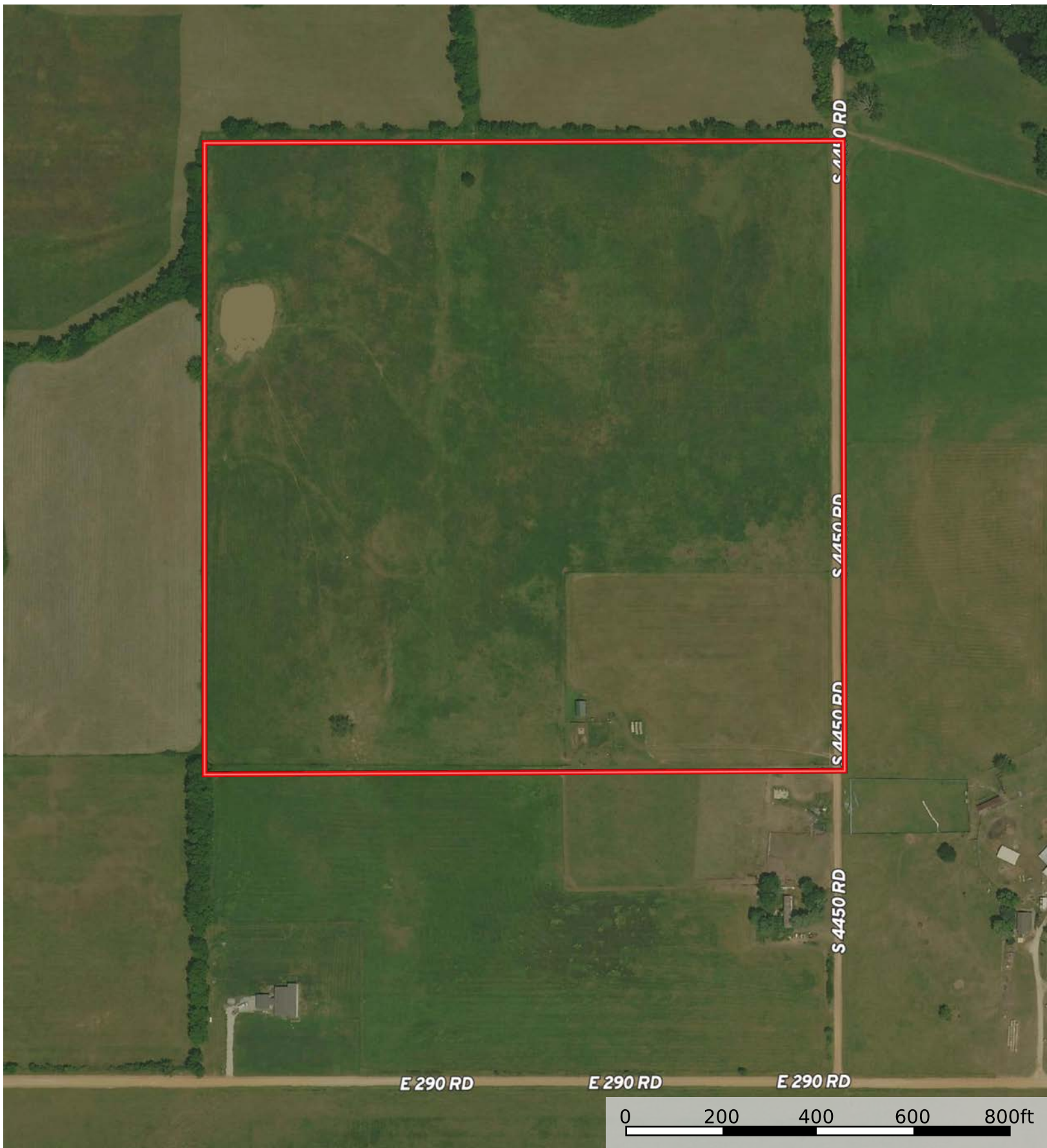



Winfrey 40 ac- Vinita
Oklahoma, AC +/-



 Boundary

Winfrey 40 ac- Vinita
Oklahoma, AC +/-




 Boundary

Winfrey 40 ac- Vinita

Oklahoma, AC +/-



 Boundary

 Boundary 40.4 ac

SOIL CODE	SOIL DESCRIPTION	ACRES	%	CPI	NCCPI	CAP
EoC	Eldorado silt loam, 3 to 5 percent slopes	14.83	36.71	0	65	3e
SuB	Apperson silty clay loam, 1 to 3 percent slopes	7.48	18.51	0	49	3e
CrB	Craig silt loam, 1 to 3 percent slopes	7.24	17.92	0	64	2s
PaA	Parsons silt loam, 0 to 1 percent slopes	6.71	16.61	0	82	3w
BoB	Apperson silt loam, 1 to 3 percent slopes	3.38	8.37	0	50	3e
Ve	Verdigris silty clay loam, 0 to 1 percent slopes, occasionally flooded	0.76	1.88	0	79	2w
TOTALS		40.4(*)	100%	-	63.69	2.8

(*) Total acres may differ in the second decimal compared to the sum of each acreage soil. This is due to a round error because we only show the acres of each soil with two decimal.

