

# LAND X

REAL ESTATE

HUNTING | FARM | RANCH



## WHITE MALLARD HUNTING CLUB



ESTABLISHED 1920

The White Mallard is a world-class duck club situated in the beating heart of the Pacific Flyway, The Butte Sink. The club prides itself on high mallard harvests and maintains a pristine habitat with easy boat access to  $\pm$  32 blinds. Membership includes a spacious cabin with numerous amenities, and a private boat dock.

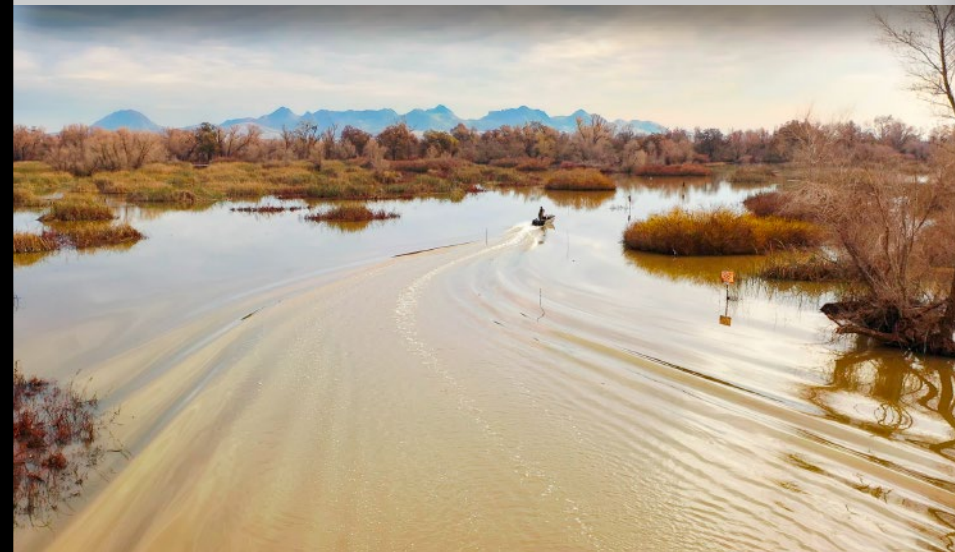
**\$ 1,700,000**

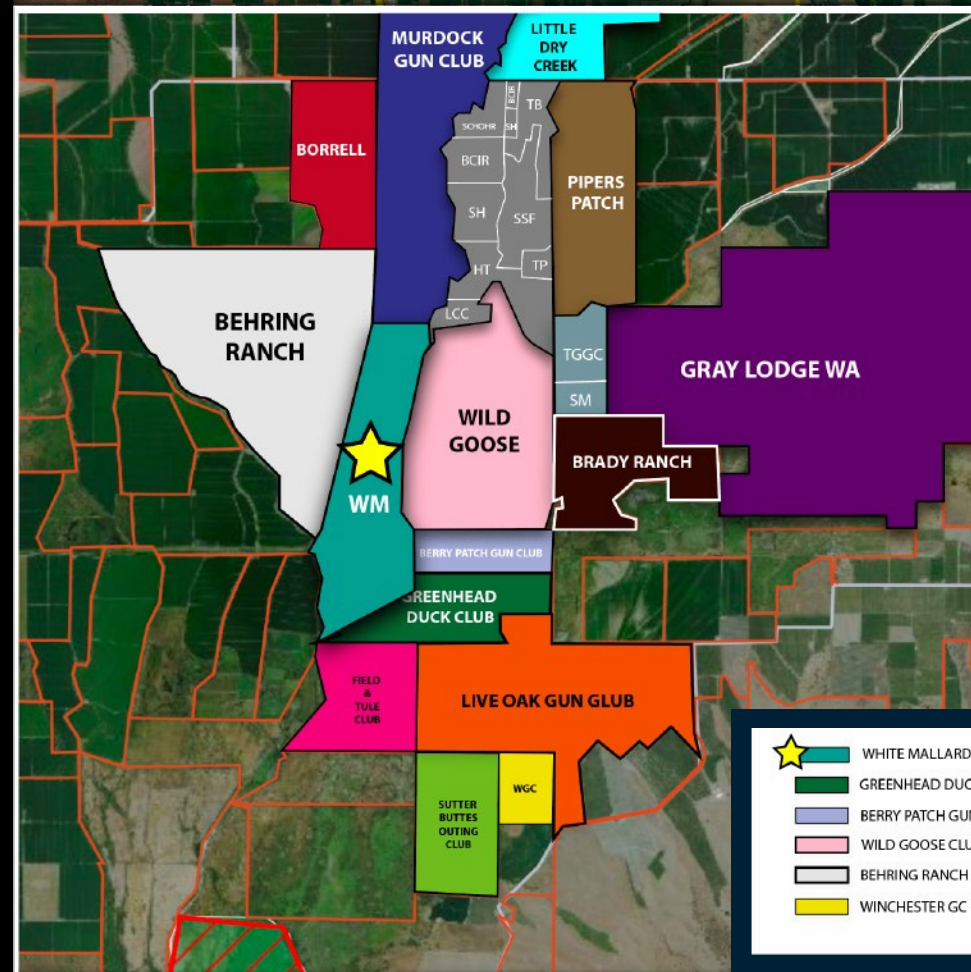
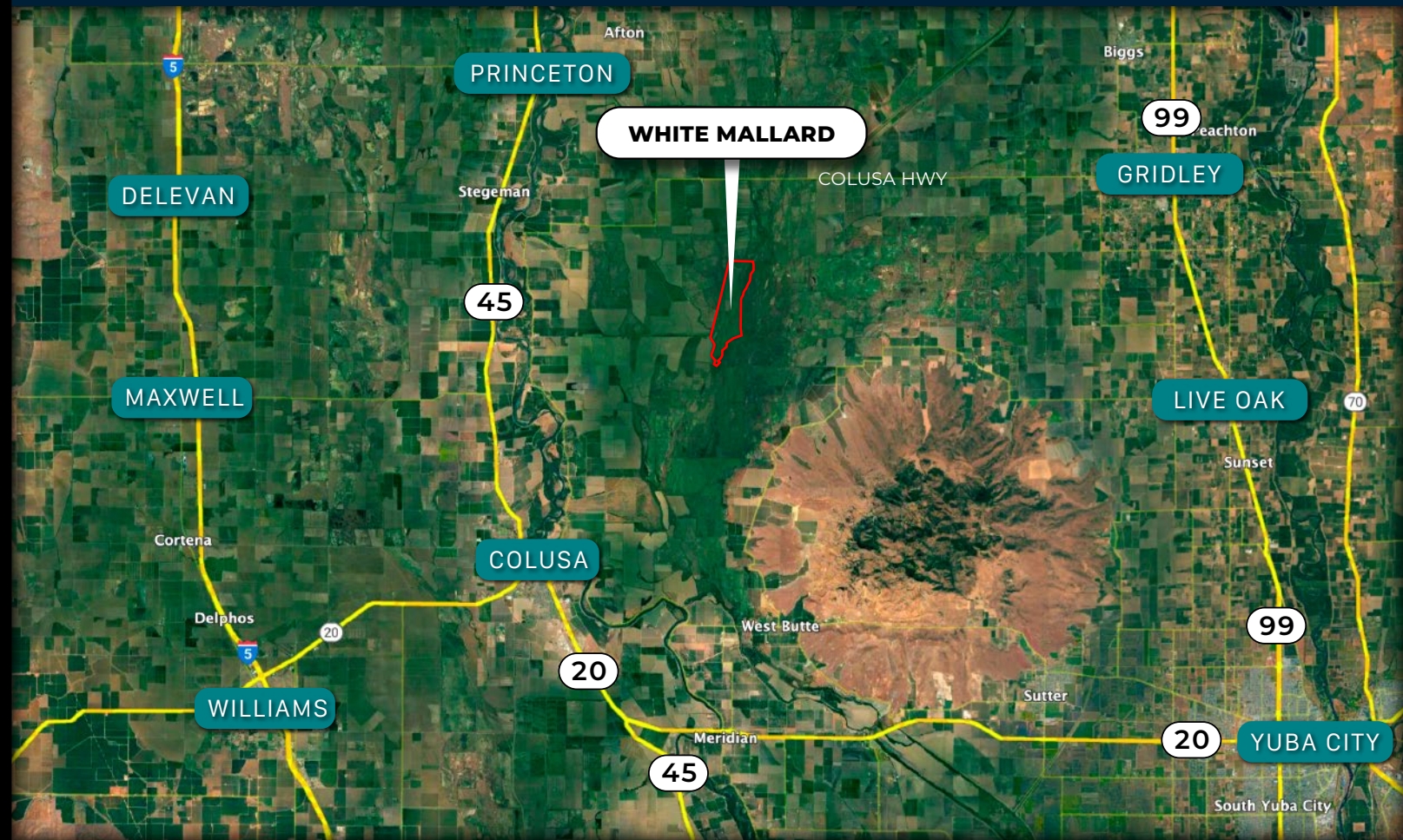
**$\pm$  978 Acres**

The Butte Sink, CA

Dan Haugh  
Land X Real Estate, Inc.  
DRE#02042534  
916-871-9000  
Dan@LandXinc.com

LANDXINC.COM





The White Mallard is nestled between the Butte Creek to the East and Drumhiller Slough to the West. The club ensures high traffic with ±40 acres of refuge area dedicated to corn in a ±180 acre closed zone. The club can be accessed from Gridley Hwy to the North on a well managed gravel road or Putnam Rd. (Colusa County Rd.) to the South gate.

- 8000 Gridley Rd. (North Entrance)
- 4332 Putnam Rd. (South Entrance)

8000 Gridley access road sits on a levee and provides access during heavy flooding

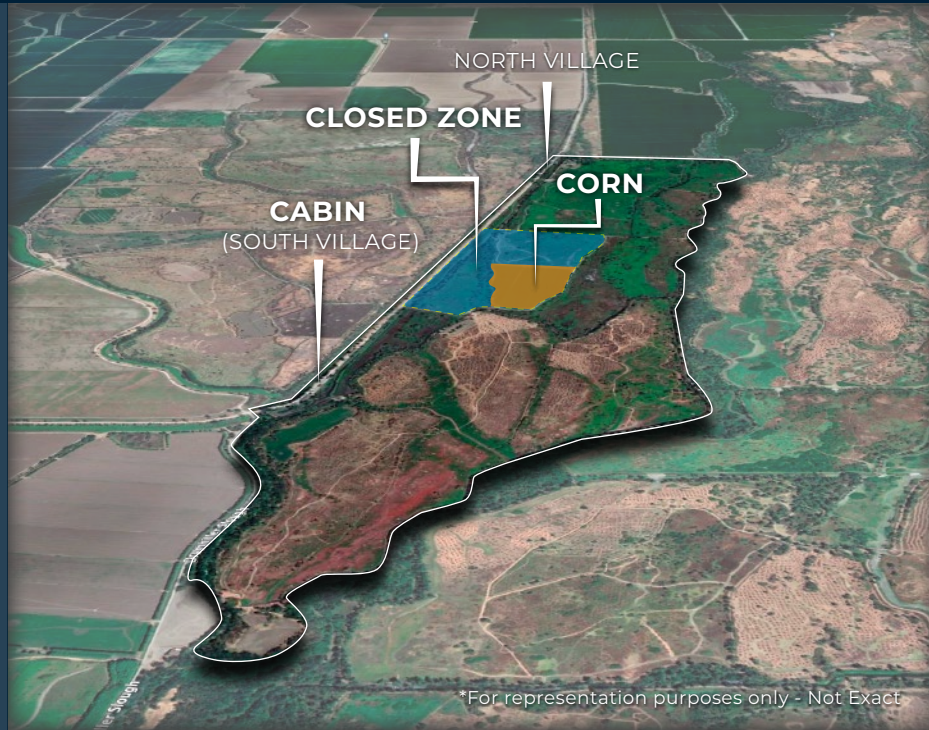
	WHITE MALLARD		PIPERS PATCH		TULE GOOSE GUN CLUB
	GREENHEAD DUCK CLUB		BORRELL		SPRIG MEADOWS
	BERRY PATCH GUN CLUB		BRADY RANCH		BUTTE CREEK ISLAND RANCH
	WILD GOOSE CLUB		FIELD & TULE CLUB		SKY-HI
	BEHRING RANCH		SUTTER BUTTES OUTING CLUB		SCHORR
	WINCHESTER GC		MURDOCK GUN CLUB		TRIPLE BEE
			LIVE OAK GUN CLUB		SANBORN SLOUGH FARMS
					TULE PATCH
					HANGTOWN
					LAST CHANCE CLUB



# WHITE MALLARD

# SPECIFICATIONS

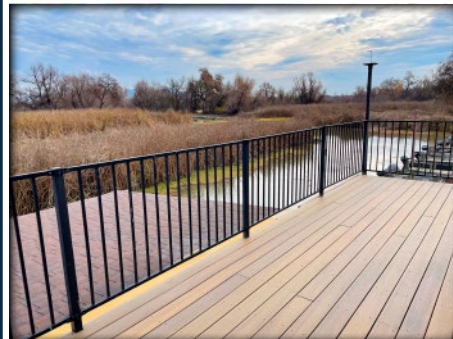
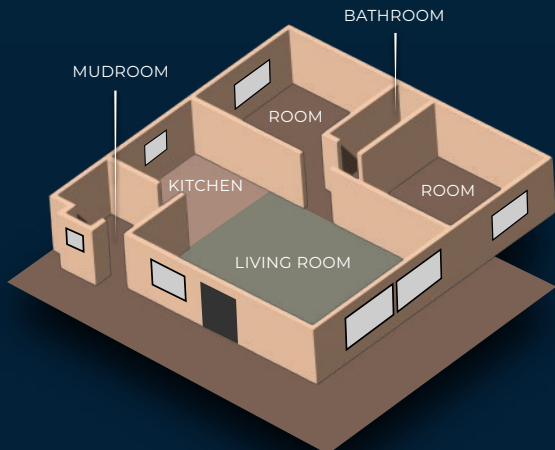
- ± 978 Total Acres
- ± 180 Acre Closed Zone
  - └ ± 40 Acres planted to corn
  - └ 2 other corn plots on the property totaling ± 22 acres
- ± 32 Blinds



Stock and site licensed to use land under house plus house and other personal assets

- 1,500 SF. Cabin
- 2 Bed | 1 Bath
- Kitchen with full Range
- Large Patio
- Private boat house
- Mudroom
- Washer & Dryer
- Back up generator

- └ Portable | Manual start
  - └ Runs on propane
- MUST BE REVIEWED BY BUYERS LICENSED ELECTRICIAN.



\*For representation purposes only

\* Boat, boat trailer & Polaris not included in sale





**LANDX**  
REAL ESTATE

**CONTACT LAND X TODAY FOR A  
PRIVATE SHOWING!**

**LANDXINC.COM**

**DAN HAUGH**

Agent - DRE#02042534

**916-871-9000**

Dan@LandXinc.com

**BRAD HULBERT**

Owner/Broker - DRE#01979855

**530-848-3314**

Brad@LandXinc.com