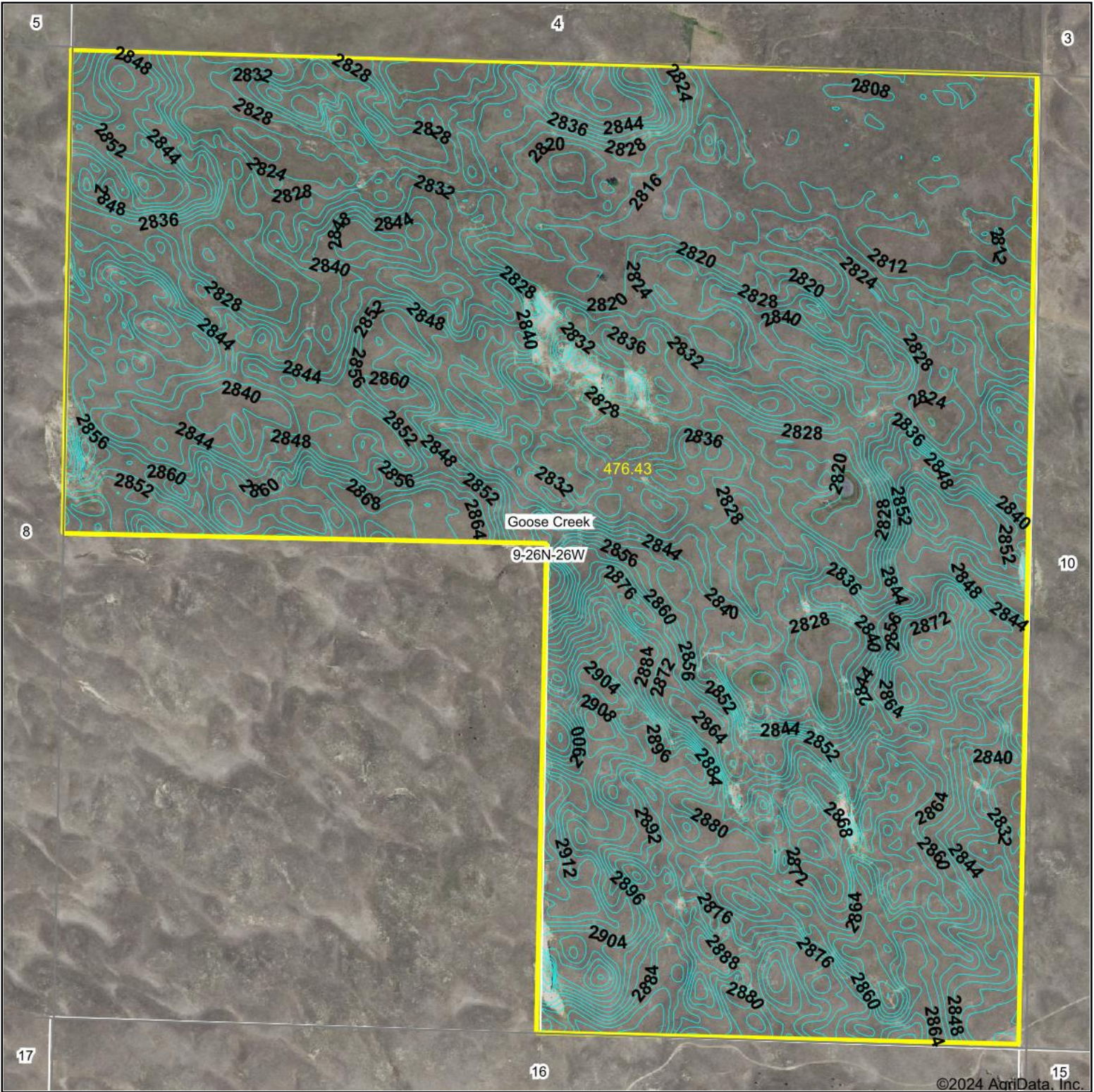


Topography Contours



Source: USGS 10 meter dem

0ft 846ft 1693ft

Interval(ft): 4.0

Min: 2,805.7

Max: 2,927.1

Range: 121.4

Average: 2,844.7

Standard Deviation: 24.34 ft



2/23/2024

9-26N-26W
Cherry County
Nebraska

Boundary Center: 42° 14' 20.63, -100° 21' 8.75



Maps Provided By:



© AgriData, Inc. 2023 www.AgriDataInc.com

Field borders provided by Farm Service Agency as of 5/21/2008.

©2024 AgriData, Inc.