

LEGEND

These standard symbols will be found in the drawing.

- SET 1/2" REBAR W/ CAP
5/8" REBAR
BOAT SPIKE
CALCULATED POINT
FENCE CORNER
1/2" REBAR
STATE MONUMENT
3/8" REBAR
STONE
1/2" PIPE
BOUNDARY LINE
TRAVERSE LINE
WIRE FENCE
CENTERLINE OF ROAD
SECTION LINE
CREEK LINE
OVERHEAD POWERLINE
NATURAL WATER

LEGAL DESCRIPTION

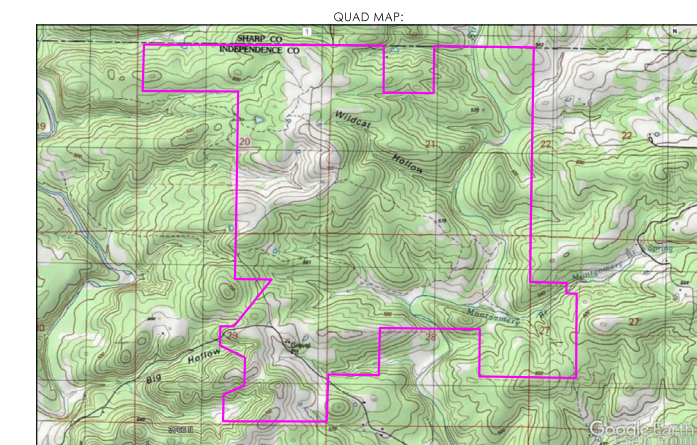
A 1898.94 ACRE TRACT OF LAND BEING THE N1/2 OF THE NW1/4 AND BEING THE E1/2 OF SECTION 20; BEING THE S1/2, BEING THE NE1/4, BEING THE W1/2 OF THE NW1/4, BEING THE SE1/4 OF THE NW1/4 OF SECTION 21; BEING THE NW1/4 OF THE SW1/4, BEING PART OF THE SW1/4 NW1/4 OF SECTION 27; BEING THE N1/2, BEING THE NE1/4 OF THE SE1/4, BEING THE NW1/4 OF THE SW1/4 OF SECTION 28, & BEING PART OF THE W1/2 OF THE SE1/4, BEING PART OF THE SW1/4 OF THE NE1/4, BEING PART OF THE NE1/4 OF THE SW1/4, BEING PART OF THE SE1/4 OF THE SW1/4, BEING THE E1/2 OF THE SE1/4, AND BEING THE NW1/4 OF THE NE1/4 OF SECTION 29, ALL IN TOWNSHIP 15 NORTH, RANGE 6 WEST, INDEPENDENCE COUNTY, ARKANSAS, MORE PARTICULARLY DESCRIBED AS FOLLOWS: BEGINNING AT A FOUND 1/2" REBAR, REPRESENTING THE NW CORNER OF SAID SECTION 21; THENCE, ALONG THE NORTH LINE OF SAID SECTION 21, S 89°26'09" E A DISTANCE OF 1427.97 FEET TO A SET 1/2" REBAR REPRESENTING THE NE CORNER OF THE NW1/4 OF THE NW1/4 OF SAID SECTION 21; THENCE, ALONG THE EAST LINE OF SAID NW1/4 NW1/4, S 00°23'04" W A DISTANCE OF 1335.21 FEET TO A SET 1/2" REBAR, REPRESENTING THE NW CORNER OF SAID SE1/4 NW1/4; THENCE, ALONG THE NORTH LINE OF SAID SE1/4 NW1/4, S 89°26'22" E A DISTANCE OF 1420.73 FEET TO A SET 1/2" REBAR, REPRESENTING THE SW CORNER OF THE NW1/4 OF THE NE1/4 OF SAID SECTION 21; THENCE, ALONG THE WEST LINE OF SAID NW1/4 NE1/4, N 00°41'43" E A DISTANCE OF 1335.12 FEET TO A FOUND 1/2" REBAR, REPRESENTING THE N1/4 CORNER OF SAID SECTION 21; THENCE, ALONG THE NORTH LINE OF SAID SECTION 21, S 89°15'12" E A DISTANCE OF 2828.29 FEET TO A FOUND STATE MONUMENT, REPRESENTING THE NE CORNER OF SAID SECTION 21; THENCE, ALONG THE EAST LINE OF SAID SECTION 21, S 01°01'30" W A DISTANCE OF 2660.95 FEET TO A FOUND STATE MONUMENT, REPRESENTING THE E1/4 CORNER OF SAID SECTION 21; THENCE, ALONG THE EAST LINE OF SAID SECTION 21, S 01°01'04" W A DISTANCE OF 2661.50 FEET TO A FOUND STATE MONUMENT, REPRESENTING THE NE CORNER OF SAID SECTION 28; THENCE, ALONG THE EAST LINE OF SAID SECTION 28, S 00°14'50" W A DISTANCE OF 1336.74 FEET TO A FOUND 1/2" PIPE, REPRESENTING THE NW CORNER OF SAID SW1/4 NW1/4 OF SAID SECTION 27; THENCE, ALONG THE NORTH LINE OF SAID SW1/4 NW1/4, S 89°19'27" E A DISTANCE OF 1027.77 FEET TO A CALCULATED POINT; THENCE, LEAVING SAID NORTH LINE, S 00°35'14" W A DISTANCE OF 295.16 FEET TO A CALCULATED POINT; THENCE, ALONG SAID EAST LINE, S 00°35'14" W A DISTANCE OF 1050.49 FEET TO A FOUND 1/2" PIPE, REPRESENTING THE NE CORNER OF SAID NW1/4 SW1/4 OF SAID SECTION 27; THENCE, ALONG THE EAST LINE OF SAID NW1/4 SW1/4, S 00°15'15" W A DISTANCE OF 1343.81 FEET TO A SET 1/2" REBAR, REPRESENTING THE SE CORNER OF SAID NW1/4 SW1/4; THENCE, ALONG THE SOUTH LINE OF SAID NW1/4 SW1/4, N 88°48'09" W A DISTANCE OF 1322.25 FEET TO A FOUND 3/8" REBAR, REPRESENTING THE SE CORNER OF SAID NW1/4 SW1/4; THENCE, ALONG THE SOUTH LINE OF THE NE1/4 SE1/4, N 89°13'43" W A DISTANCE OF 1428.88 FEET TO A SET 1/2" REBAR, REPRESENTING THE SW CORNER OF SAID NE1/4 SE1/4; THENCE, ALONG THE WEST LINE OF SAID NE1/4 SE1/4, N 00°46'10" E A DISTANCE OF 1343.44 FEET TO A SET 1/2" REBAR, REPRESENTING THE SE CORNER OF THE SW1/4 NE1/4 OF SAID SECTION 28; THENCE, ALONG THE SOUTH LINE OF SAID N1/2 OF SECTION 28, N 89°20'19" W A DISTANCE OF 2836.82 FEET TO A SET 1/2" REBAR, REPRESENTING THE NE CORNER OF SAID NW1/4 SW1/4; THENCE, ALONG THE EAST LINE OF SAID NW1/4 SW1/4, S 01°37'04" W A DISTANCE OF 1338.44 FEET TO A SET 1/2" REBAR, REPRESENTING THE SE CORNER OF SAID NW1/4 SW1/4; THENCE, ALONG THE SOUTH LINE OF SAID NW1/4 SW1/4, N 89°14'25" W A DISTANCE OF 1428.41 FEET TO A SET 1/2" REBAR, REPRESENTING THE NE CORNER OF THE SE1/4 SE1/4 OF SAID SECTION 29; THENCE, ALONG THE EAST LINE OF SAID SECTION 29, S 02°02'23" W A DISTANCE OF 1336.19 FEET TO A FOUND STONE, REPRESENTING THE SE CORNER OF SAID SECTION 29; THENCE, ALONG THE SOUTH LINE OF SAID SECTION 29, N 89°56'13" W A DISTANCE OF 2694.89 FEET TO A FOUND STONE, REPRESENTING THE S1/4 CORNER OF SAID SECTION 29; THENCE, ALONG SAID SOUTH LINE, N 88°12'00" W A DISTANCE OF 245.72 FEET TO A SET 1/2" REBAR; THENCE, LEAVING SAID SOUTH LINE, N 01°15'51" E A DISTANCE OF 750.42 FEET TO A SET 1/2" REBAR; THENCE, N 68°15'51" E A DISTANCE OF 643.50 FEET TO A SET 1/2" REBAR; THENCE, N 01°15'51" E A DISTANCE OF 792.00 FEET TO A SET 1/2" REBAR; THENCE, N 63°44'09" W A DISTANCE OF 792.00 FEET TO A SET 1/2" REBAR; THENCE, N 01°15'51" E A DISTANCE OF 541.77 FEET TO A SET 1/2" REBAR ON THE NORTH LINE OF SAID NE1/4 SW1/4 OF SECTION 29; THENCE, ALONG SAID NORTH LINE, S 89°23'20" E A DISTANCE OF 382.56 FEET TO A SET 1/2" REBAR, REPRESENTING THE SW CORNER OF SAID SW1/4 NE1/4 OF SECTION 29; THENCE, N 38°54'21" E A DISTANCE OF 1709.01 FEET TO A SET 1/2" REBAR ON THE SOUTH LINE OF SAID NW1/4 NE1/4 OF SECTION 29; THENCE, ALONG SAID SOUTH LINE, N 89°12'13" W A DISTANCE OF 1042.64 FEET TO A SET 1/2" REBAR, REPRESENTING THE SW CORNER OF THE NW1/4 NE1/4 OF SAID SECTION 29; THENCE, ALONG THE WEST LINE OF SAID NW1/4 NE1/4, N 01°18'43" E A DISTANCE OF 1344.76 FEET TO A SET 1/2" REBAR, REPRESENTING THE S1/4 CORNER OF SAID SECTION 20; THENCE, ALONG THE WEST LINE OF THE E1/2 OF SAID SECTION 20, N 00°50'22" E A DISTANCE OF 3975.90 FEET TO A SET 1/2" REBAR, REPRESENTING THE SE CORNER OF THE N1/2 OF THE NW1/4 OF SAID SECTION 20; THENCE, ALONG THE SOUTH LINE OF SAID N1/2 NW1/4, N 89°38'51" W A DISTANCE OF 2708.76 FEET TO A SET 1/2" REBAR, REPRESENTING THE SW CORNER OF THE NW1/4 NW1/4 OF SAID SECTION 20; THENCE, ALONG THE WEST LINE OF SAID NW1/4 NW1/4, N 01°36'59" E A DISTANCE OF 1315.50 FEET TO A SET 1/2" REBAR, REPRESENTING THE NW CORNER OF SAID SECTION 20; THENCE, ALONG THE NORTH LINE OF SAID SECTION 20, S 89°51'44" E A DISTANCE OF 5382.05 FEET BACK TO THE POINT OF BEGINNING OF SAID 1898.94 ACRE TRACT.

SURVEYOR'S CERTIFICATE

I, KEATON B. JOHNSON, ARKANSAS LICENSED PROFESSIONAL SURVEYOR, NO. 1735, DO HEREBY CERTIFY THAT THIS PLAT REPRESENTS THE RESULTS OF A SURVEY MADE ON THE GROUND UNDER MY SUPERVISION.

GENERAL NOTES

THE ABOVE DESCRIBED TRACT IS SUBJECT TO ANY AND ALL RIGHTS-OF-WAY AND EASEMENTS THAT ARE OF RECORD AND WHICH ARE PHYSICALLY IN PLACE. ANY IMPROVEMENTS OR EASEMENTS SHOWN ARE THE RESULT OF A SURVEY AND THAT COULD BE REASONABLY OBSERVED ON THE GROUND. ALL DISTANCES ARE HORIZONTAL GROUND DISTANCES. ANY COORDINATES SHOWN WERE DERIVED FROM GPS OBSERVATION VIA THE AR, D.O.T. C.O.R.S. NETWORK.



R. E. B. FARMS, LLC
1898.94 ACRES

SURVEY CODES:
500-15N-06W-0-20-124-32-1735
500-15N-06W-0-21-000-32-1735
500-15N-06W-0-27-304-32-1735
500-15N-06W-0-28-000-32-1735
500-15N-06W-0-29-123-32-1735

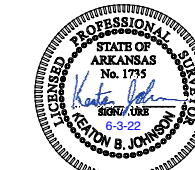
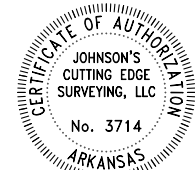


Table with 2 columns: 'FOR THE USE AND BENEFIT OF: R. E. B. FARMS, LLC' and 'Johnson's Cutting Edge Surveying, LLC'. Includes date (6-2-2022), drawn by (K. JOHNSON), job number (500-1735-00594), and page (1 OF 1). Also includes a scale bar (0, 1000, 2000 feet) and a north arrow.