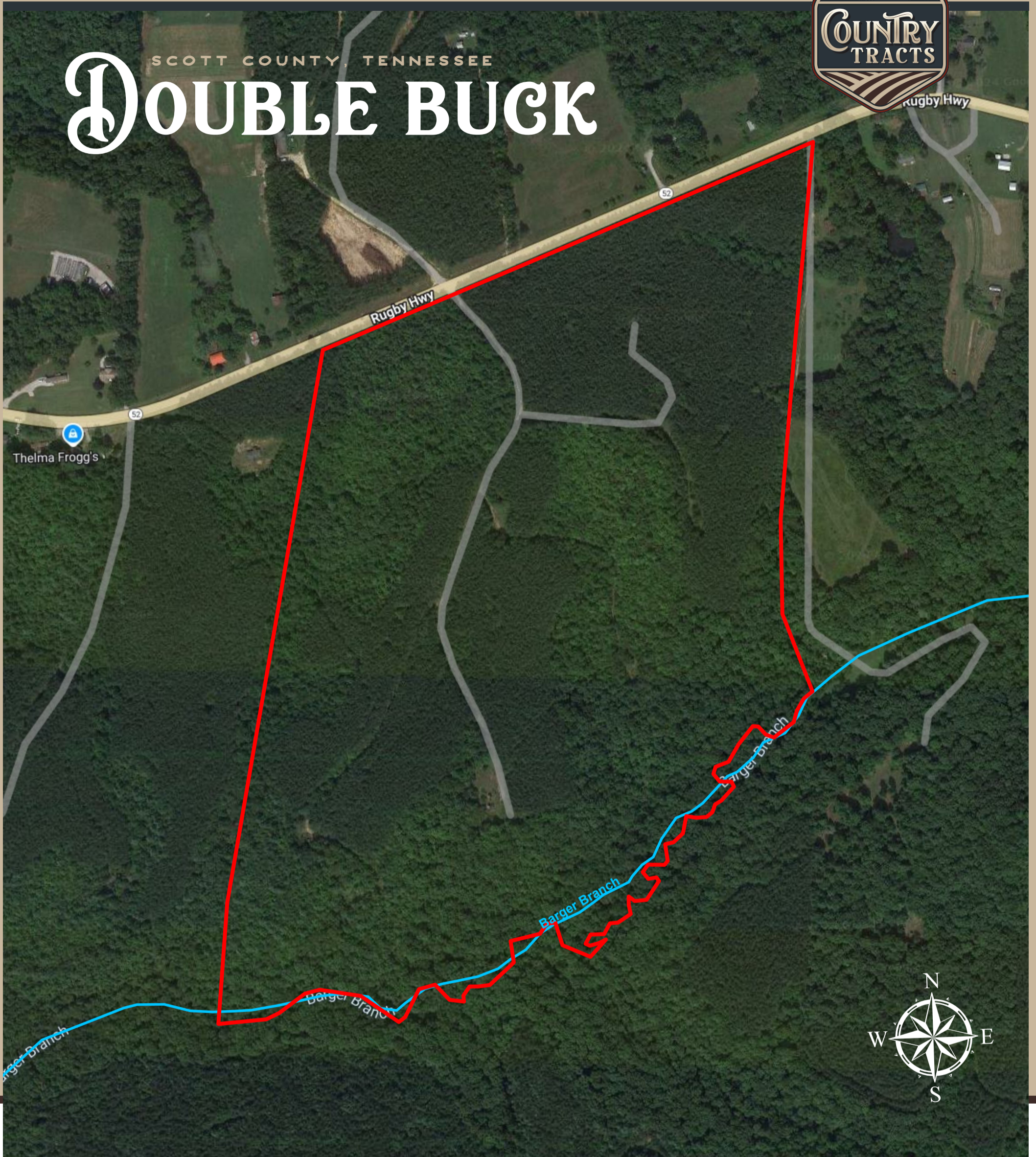




SCOTT COUNTY, TENNESSEE
DOUBLE BUCK



LEGEND

-  Road
-  Stream
-  Parcel boundary

FEATURES

- Unrestricted
- Wildlife
- Convenient access
- Barger Branch frontage

100+ Acres

"ALL BOUNDARY LINES DEPICTED IN MAPS, AERIALS, PICTURES OR VIDEOS ARE ESTIMATES AND SHOULD NOT BE RELIED ON AS LEGAL DOCUMENTS"

WWW.COUNTRYTRACTS.COM