



# Kenner Farm

Welcome to your dream retreat: a stunning modern farmhouse that combines luxury living with the tranquility of nature. Nestled on an expansive 62 acres, this exceptional property is a haven for those seeking a perfect blend of comfort and outdoor adventure.

**PROPERTY FOR SALE | PRICE: \$759,900**



**CLICK HERE FOR  
DRONE TOUR**

The logo for Newmark, featuring the word "NEWMARK" in a bold, white, sans-serif font against a dark background.

**NEWMARK**





# Kenner Farm

908 Reed Rd  
Lexington, TN

This unique property offers an unparalleled lifestyle for those who appreciate modern comfort and the beauty of the outdoors. It's more than just a home; it's a countryside escape that caters to both tranquility and adventure.





## Property Highlights:

- **Modern Farmhouse:** Experience contemporary elegance with a rustic touch. This 3bd/2.5ba farmhouse currently being utilized as a 5bd/2.5ba boasts spacious interiors and an open floor plan tailored for modern living. Large windows throughout the home invite natural light and the screened porch and deck provide breathtaking views of the surrounding landscape.
- **Versatile Shop:** The property includes a versatile 40x60 shop perfect for hobbyists or professionals needing additional workspace. This feature adds significant value and convenience to the property.
- **1.6-Acre Stocked Pond:** A serene, well-maintained pond provides an idyllic setting for fishing and relaxation. It's stocked and ready for your angling adventures, making it an excellent resource for both seasoned fishermen and beginners. Pond was stocked and managed by Southeastern Pond Management.
- **Ample Hunting Opportunities:** With 62 acres of privacy, this property is a hunter's paradise consisting of a mix of approximately 22 acres of open land and 40 acres of timber. Enjoy plentiful deer and small game hunting right from your backyard.
- **Expansive Land:** Encompassing 62 acres, the land offers endless possibilities—whether it's exploring nature, hunting, fishing, or simply enjoying the privacy and freedom that comes with such a vast property.
- **Income Potential:** Property has been used as a 2nd home and over the past few years Seller has also listed on VRBO/AirBnB. This property has rented exceptionally well producing income from \$300-400/night depending on the time of year. Guests have ranged from visitors from out West just wanting to get away but be close enough for day visits to Graceland in Memphis or Broadway St in Nashville. There are several annual bass fishing tournaments on the lakes in the area that bring guests from around the state as well as shooting tournaments that have brought guests from Tx the last few years. You can check out the reviews in the VRBO link (note the pictures in VRBO have not been updated since originally listed).







# Kenner Farm







# Kenner Farm



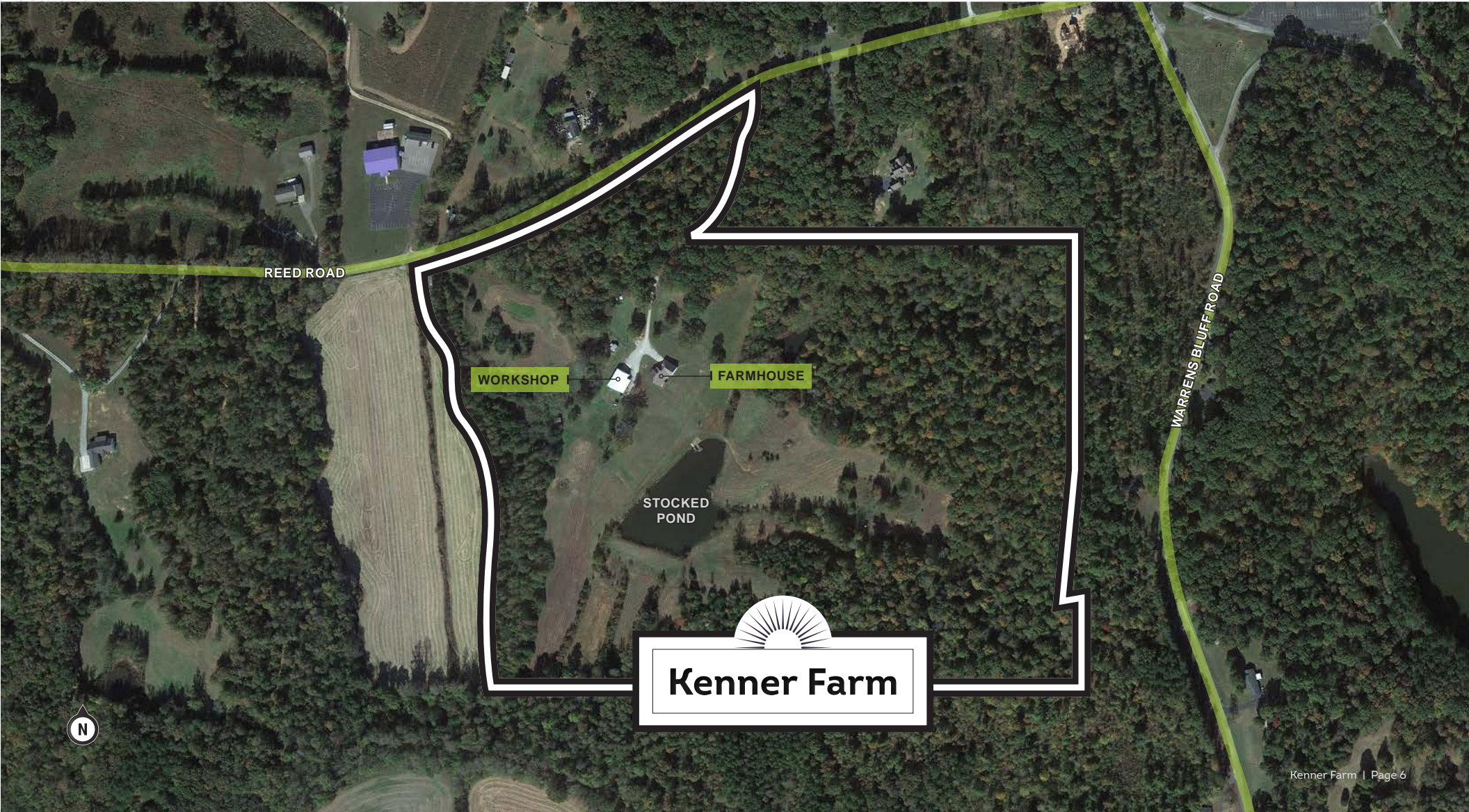


**3 Bedroom/2.5 Bath**  
modern farmhouse  
currently being utilized as a  
5bd/2.5ba

**40x60'**  
on-site workshop

**62 total acres**  
22 acres of open land  
40 acres of timber

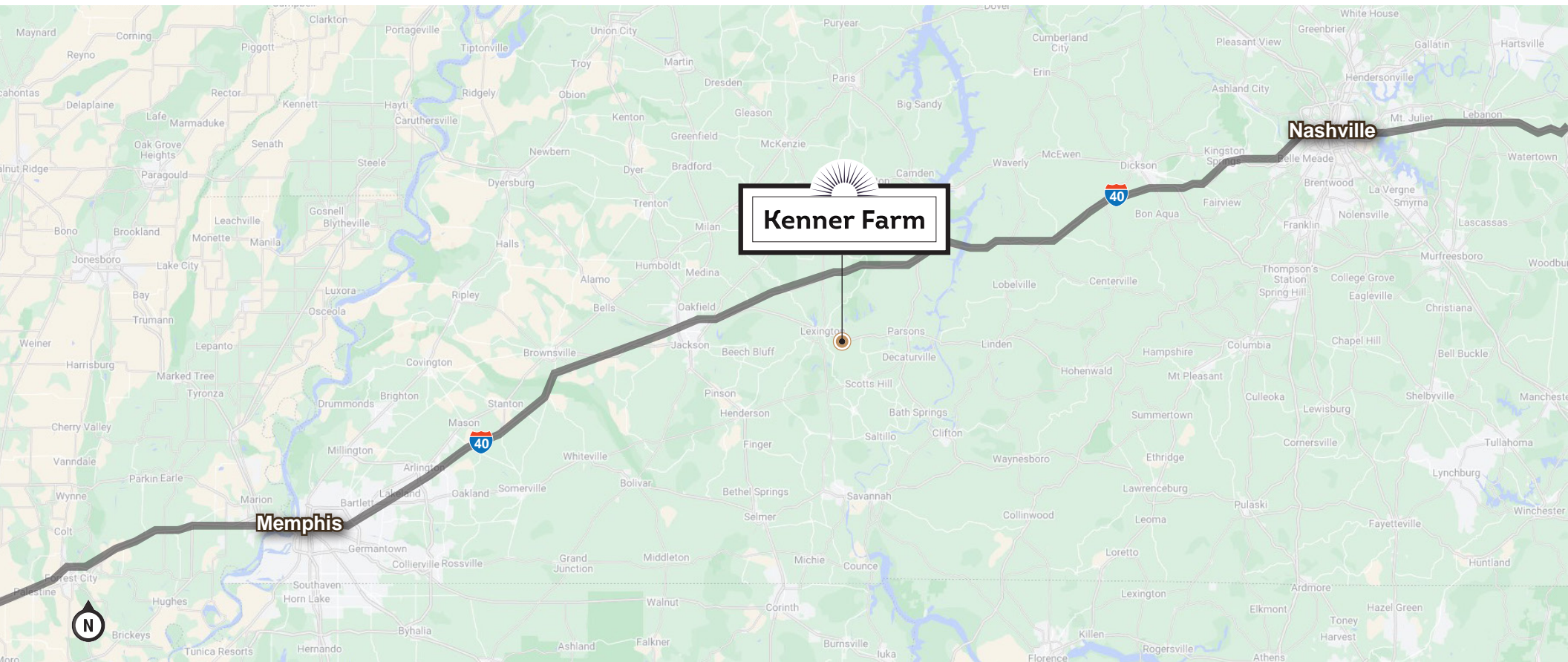
**1.6 acre**  
stocked pond





## Location:

Located at 908 Reed Rd in Lexington, TN this property sits halfway between Memphis and Nashville, TN. Approximately 100 miles from each big city, residents and guests enjoy easy access to urban amenities with just a short drive.



## Additional Resources:



62 ac near Natchez Trace State Park, stocked pond, near Memphis/Nashville  
[View VRBO Listing](#)



Lexington, TN  
Learn about our beautiful community



Natchez Trace Parkway  
U.S. National Park Service



The Lakes  
Explore the many lakes in the area





**Lexington, Tennessee**, is a charming small city located in Henderson County, known for its friendly atmosphere and rich history. It serves as the county seat and is conveniently positioned between Memphis and Nashville, making it accessible for residents and visitors alike.

The city is recognized for its strong sense of community and traditional Southern hospitality. Lexington offers a mix of historical and modern attractions, including picturesque parks, local shops, and eateries that capture the essence of small-town living. The community places a significant emphasis on maintaining its cultural heritage, which is often showcased through local events and festivals.

Real estate in Lexington varies, with options ranging from historic homes to newly developed residential areas. Given its location and unique appeal, the town can be an attractive choice for those looking to experience a serene lifestyle while remaining connected to larger urban centers.

Lexington also offers numerous recreational opportunities, particularly with the nearby Natchez Trace State Park, which provides a range of outdoor activities such as camping, hiking, and fishing.

In the Lexington, TN area, there are several public lakes that offer recreational activities such as fishing, boating, and picnicking. Two of the most notable public lakes include:

- **Beech Lake:** This is a popular destination known for its scenic beauty and range of activities. It provides opportunities for swimming, fishing, and boating, making it a favorite among locals and visitors.
- **Pine Lake:** Another inviting spot for outdoor enthusiasts, Pine Lake offers fishing opportunities and picturesque views, perfect for a relaxing day out.

There are also other smaller bodies of water and recreational areas available in and around Lexington, providing ample options for water-related activities.







# Kenner Farm

For more information, contact:

**James Rainer**

Director

t 901-302-4304

[james.rainer@nmrk.com](mailto:james.rainer@nmrk.com)

[nmrk.com](http://nmrk.com)

**NEWMARK**

The information contained herein has been obtained from sources deemed reliable but has not been verified and no guarantee, warranty or representation, either express or implied, is made with respect to such information. Terms of sale or lease and availability are subject to change or withdrawal without notice.